



Taylor & Francis Group
an **informa** business

Impact of AI on Library Collection Strategies

CONCERT 2025

Paolo Lombardi

-

Director of Artificial Intelligence Innovation





Taylor & Francis Group
an **informa** business

Unprecedented Adoption

Several independent surveys (T&F, Wiley, academic institutions, etc.) estimate AI adoption among **researchers** to be between 62% and 87% across different disciplines.

Overall AI Adoption Rate in 2025

78%

A monumental leap from just 35% in early 2023, signaling a fundamental shift in research methodologies and academic workflows.

Discover, Ideate, Search

Summarise, Extract Information, Data Analysis, Organise Knowledge

Write, Drafting, Grammar Checks – also for funding applications

Translation and Accessibility



Taylor & Francis Group
an **informa** business

...Across the Entire **Process**

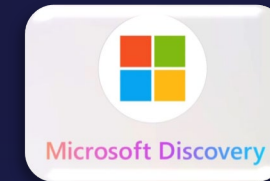
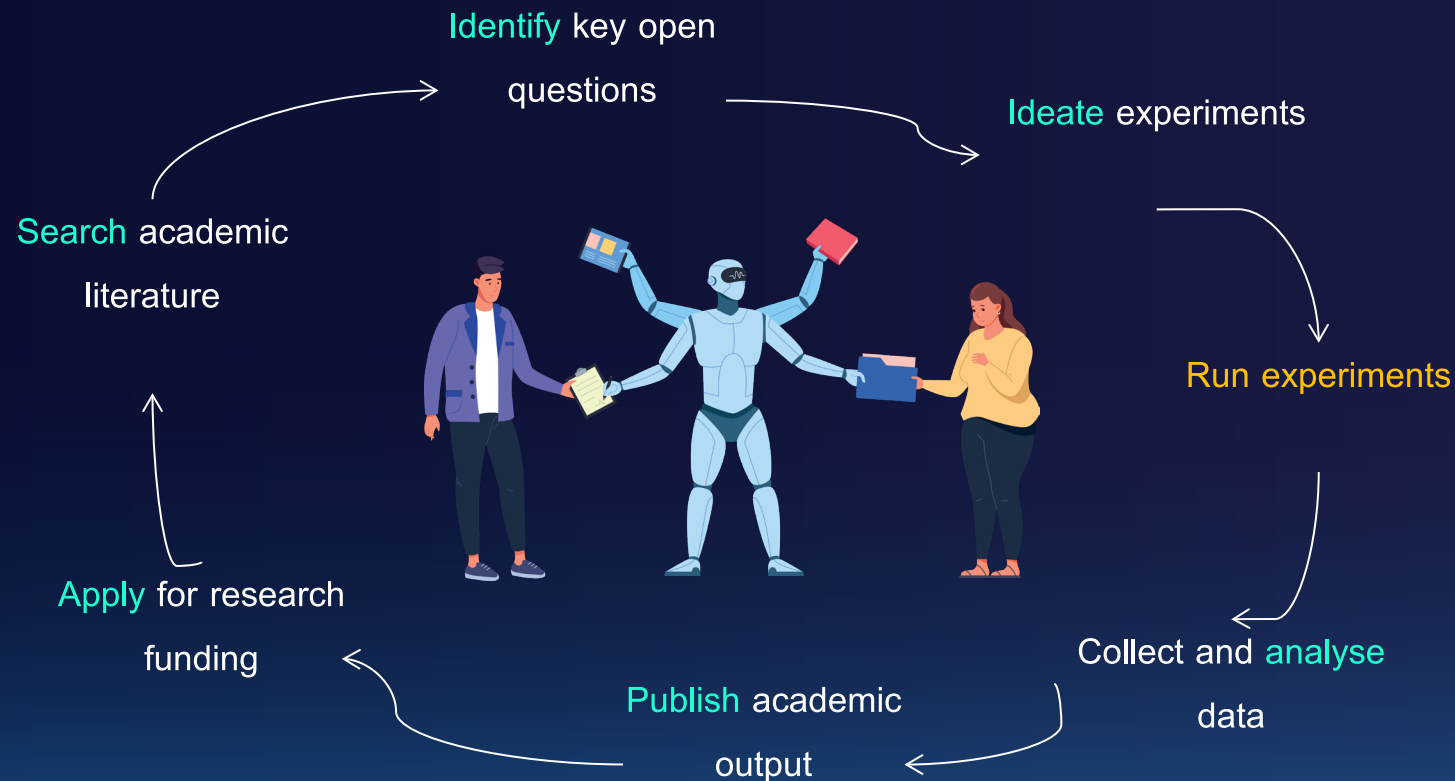
Reports on usage of AI from T&F editors in 2025





Taylor & Francis Group
an **informa** business

Full-AI Research Cycle



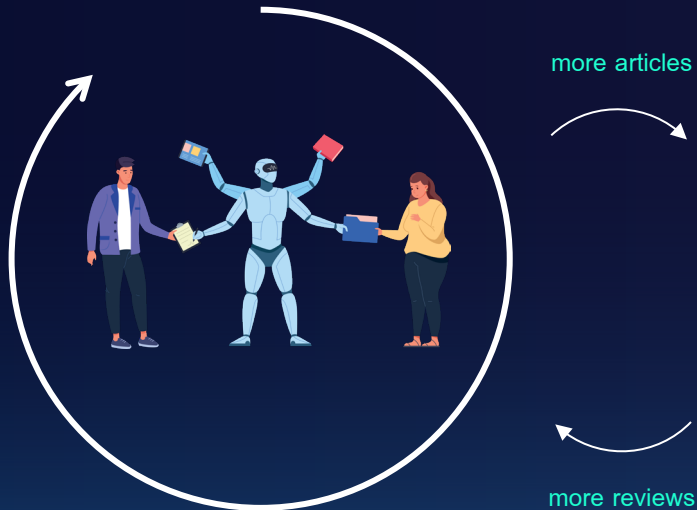
Already happening in AI and Software Engineering research, thanks to AI coding agents



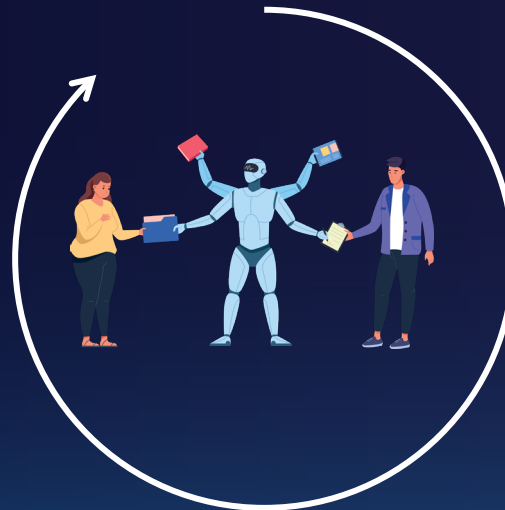
Taylor & Francis Group
an **informa** business

Dysfunctional Incentives

AI in Scholarly
Production



AI in Peer Review



AI accelerates a **substantial increase in the volume** of academic literature alongside a potential **dilution of its overall quality**

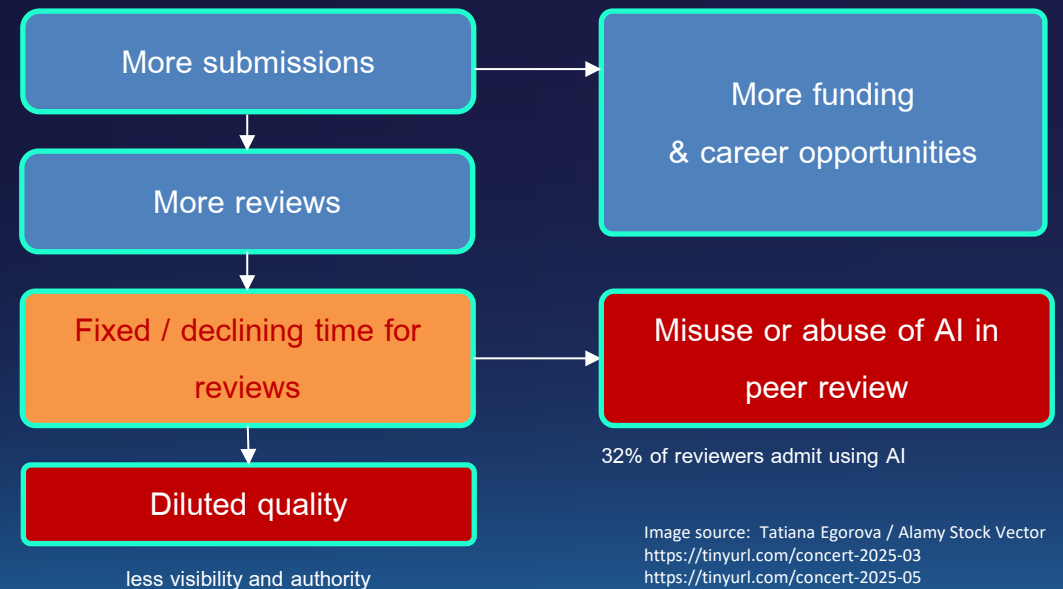


Image source: Tatiana Egorova / Alamy Stock Vector
<https://tinyurl.com/concert-2025-03>
<https://tinyurl.com/concert-2025-05>



Taylor & Francis Group
an **informa** business

Foundational Disruption

The traditional workflow, centred on producing a static article, is giving way to a **more dynamic** ecosystem. AI tools are introducing **efficiencies** like automated summaries and enhanced metadata, but the most profound impact of AI is on the **nature of 'published content' itself**.

Traditional workflow



AI-driven workflow





Taylor & Francis Group
an **informa** business

Dynamic Artifacts

Increasingly, academic research produces and **requires** high-value, **continuously updated**, “live” **artifacts** to function and deliver novel knowledge.

Live articles (e.g., F1000)

Code repositories

Executable models

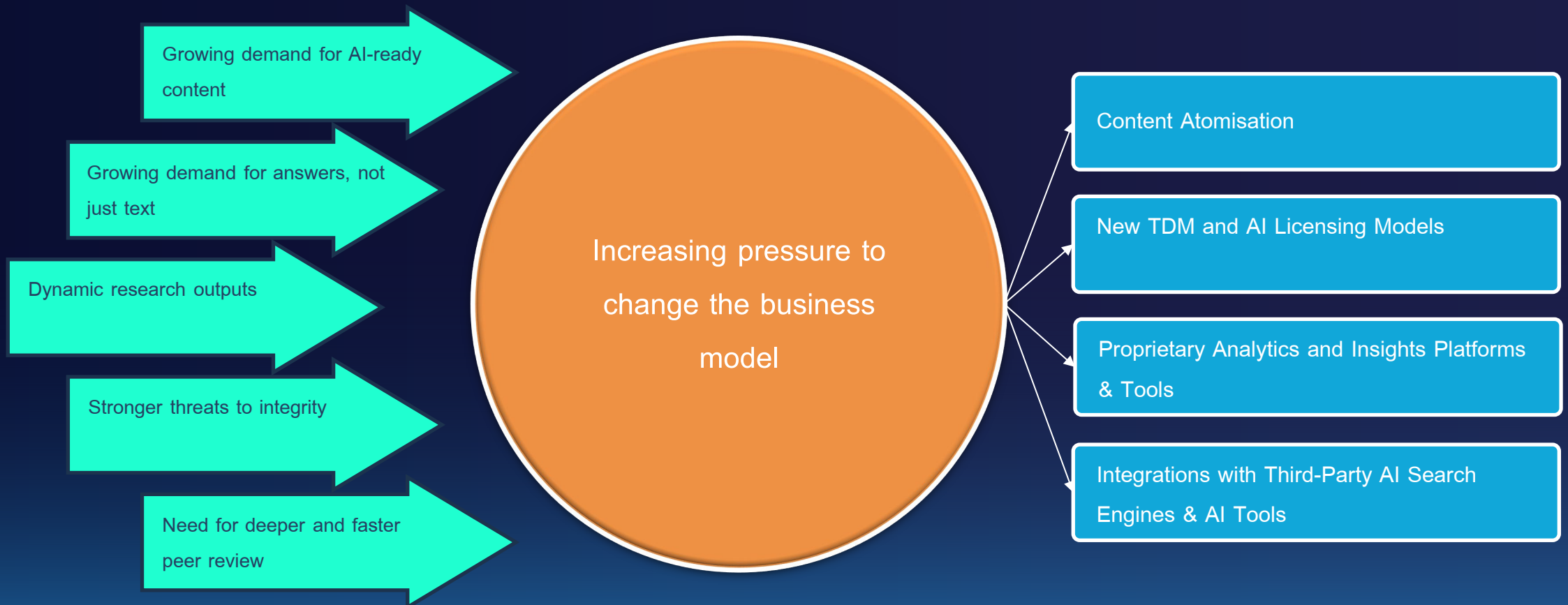
AI-Ready Datasets (AIRDs)

The act of ‘publication’ itself is **redefined** when the **core artifact** encapsulating the knowledge is a **dynamic object** such as a live report, dataset, data stream, code, or model.



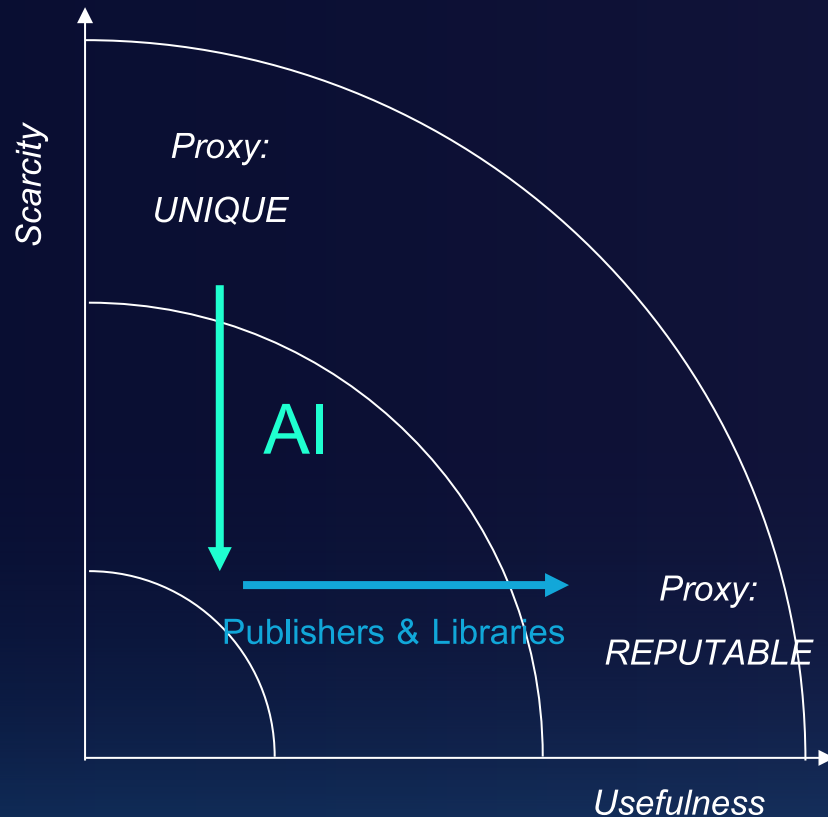
Taylor & Francis Group
an **informa** business

Challenges for Publishers





Taylor & Francis Group
an **informa** business



Value of Content in an AI World

Knowledge markets, like all markets, function in presence of **usefulness** and **scarcity** of an asset.

In academic publishing, these have been proxied by **uniqueness (cited original)** and **reputation (impact factor)**.

AI will increase the pressure on the scarcity value dimension. Publishers and libraries will have to react by focusing on **useful, reputable, and validated sources**.



Taylor & Francis Group
an **informa** business

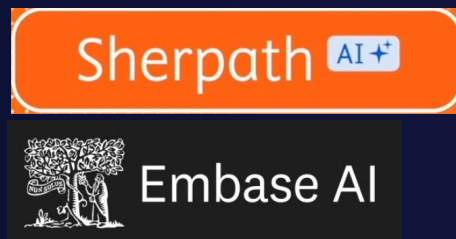
Publishers' Transformation

Many leading publishers are transitioning from **content** providers to **platform** providers.

Old model: Journal Subscription

New model: AI-Enhanced Platform

Primary asset	Full-text articles (PDF)	AI-ready content and analytics
Revenue model	Paywalled by journal package	Tiered platform license
Audience	Humans	Humans & machines
Discovery	Keyword search, citations	Semantic search, analytics
Metrics	Citations, downloads	Integrations, research outcomes (usefulness)

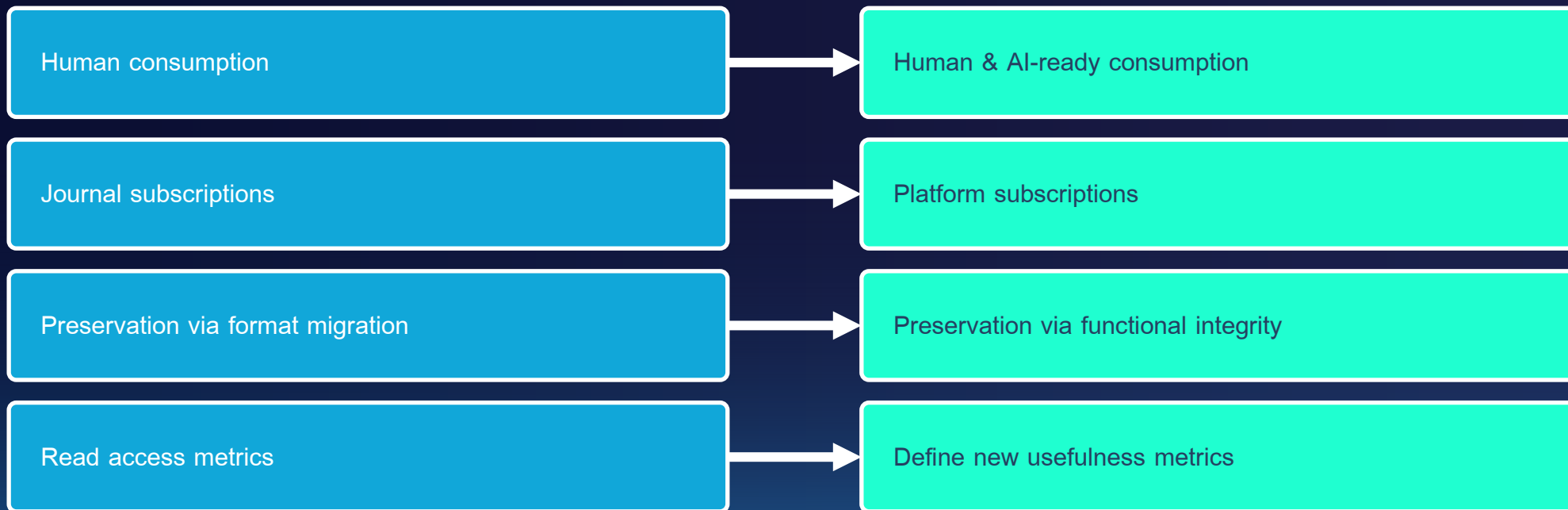




Taylor & Francis Group
an **informa** business

Challenges for Libraries

Traditionally, the role of libraries has been to **acquire, organise, and preserve materials** to help reproduce experiments, verify results and build new knowledge.





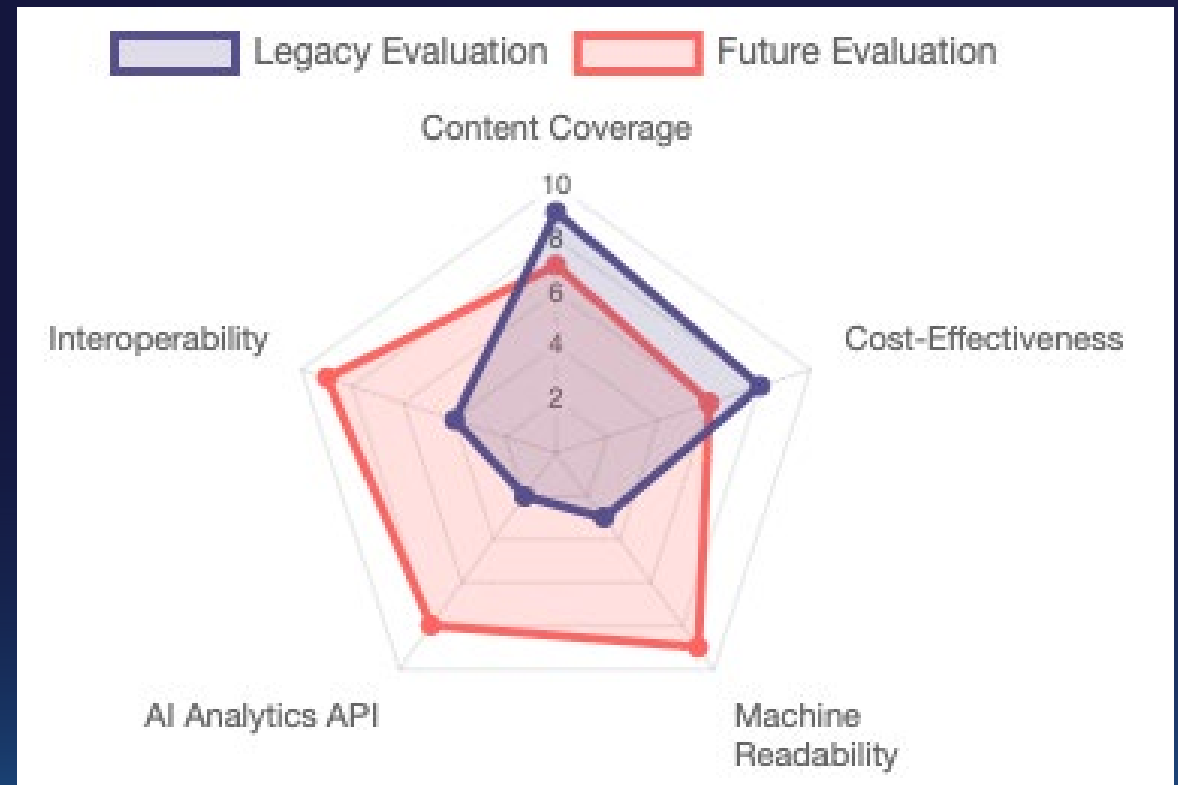
Taylor & Francis Group
an **informa** business

New Evaluation Models

The criteria for evaluating and justifying investments will expand beyond content access and cost to embrace **data interoperability** and the **effectiveness of AI tools** for novel research.

Metrics of usefulness will likely encompass **productivity enhancement** and **impact on research value**.

Libraries will need to **integrate more tightly with the IT function** to share decisions on tech infrastructure and SLA to users.





Taylor & Francis Group
an **informa** business

THANK YOU

Paolo.Lombardi@tandf.co.uk