



November 10–11, 2025

CONCERT Annual Conference, Taiwan

Bridging Intelligence: Practical AI applications in libraries

Axel Kaschte, PhD

Product Strategy Director, OCLC EMEA & APAC



We believe that AI is a game changer for libraries

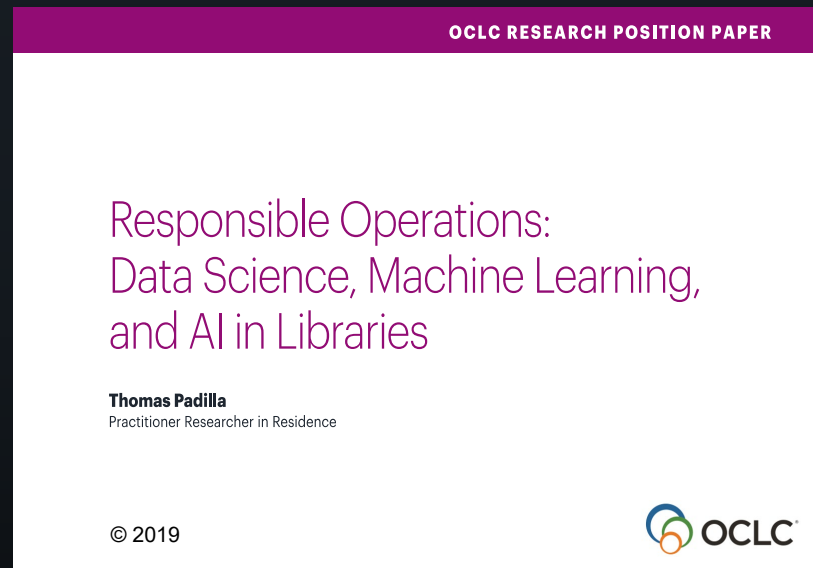
Internally - Making libraries more efficient

Externally - connect more deeply with their communities

To realize this promise,
OCLC has been on a
six-year journey of
responsible AI innovation

OCLCs 1st AI report in 2019

In Nov 2022, ChatGPT arrives...



OCLC Research Library Partnership: AI for Metadata Workflows

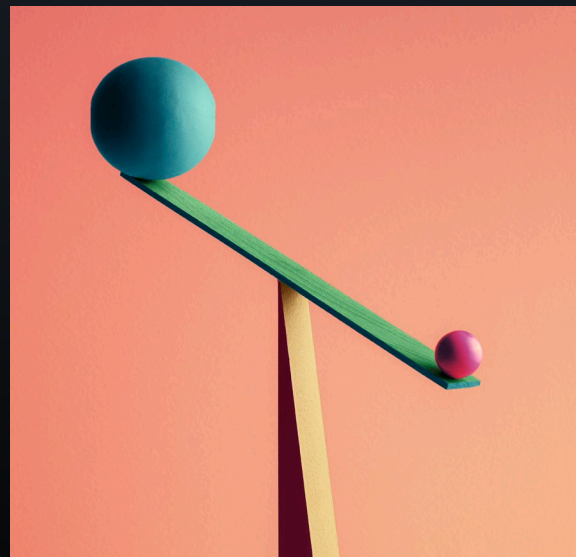
- 2023-2024 OCLC / LIBER*
“Building for the Future” series:
Transformative technologies as an
opportunity to elevate the role of the library
- 2024 OCLC RLP Metadata Managers Focus Group:
“Getting ready for AI” discussions & report



* LIBER is Europe's largest association of research libraries, representing 420+ university, national and research libraries.

Building for the future: **Opportunities and Responsibilities**

- Environmental impacts of significant energy usage
- Privacy of user data
- Use of copyrighted materials in LLMs
- Misinformation created by inaccuracies and hallucinations
- Risks of nefarious manipulations
- English language dominance in LLM models
- The ability to acquire relevant and usable information amidst intense information overload

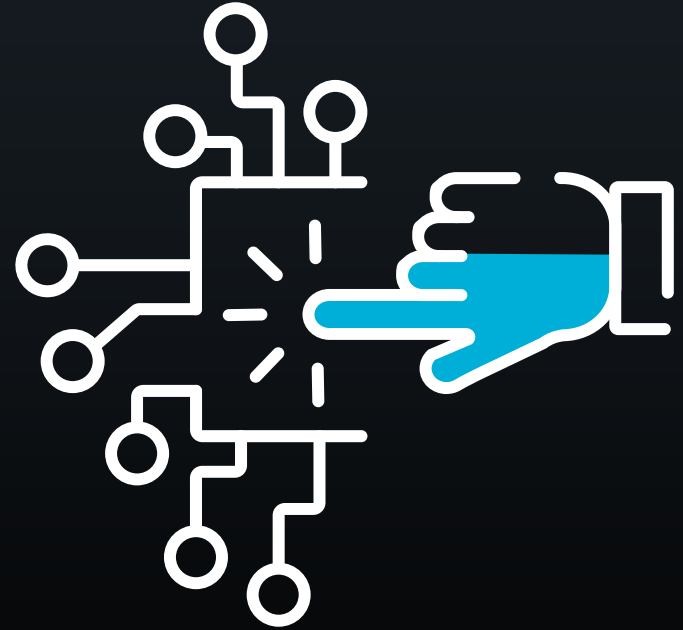


Responsible AI Innovation

- 1 Build a value-based framework
- 2 Understand libraries' uses for AI
- 3 Open exchange with the community

AI and sustainability

**We focus on
sustainable AI by
reducing energy use,
optimizing resources,
and prioritizing
genuine impact.**



What we're not doing with AI

OCLC does not hold, or process, the content of the publications it catalogs. None of the data in WorldCat has been used to train large language models like ChatGPT or Google Gemini.

OCCLC's AI tools focus on services and data



Library services



Library data

Exploring AI Opportunities in Metadata Operations

OCCLC AI Initiatives (examples)

1. **Serendipitous discovery:** genAI-powered book recommender pilot in WorldCat.org and mobile app
2. **Scaling data quality operations:** Machine-learning deduplication pilots
3. **Supercharging cataloging workflows:** predictive classification pilot

Approach: focus on library values

Surface related titles using AI

User approach: Transparency

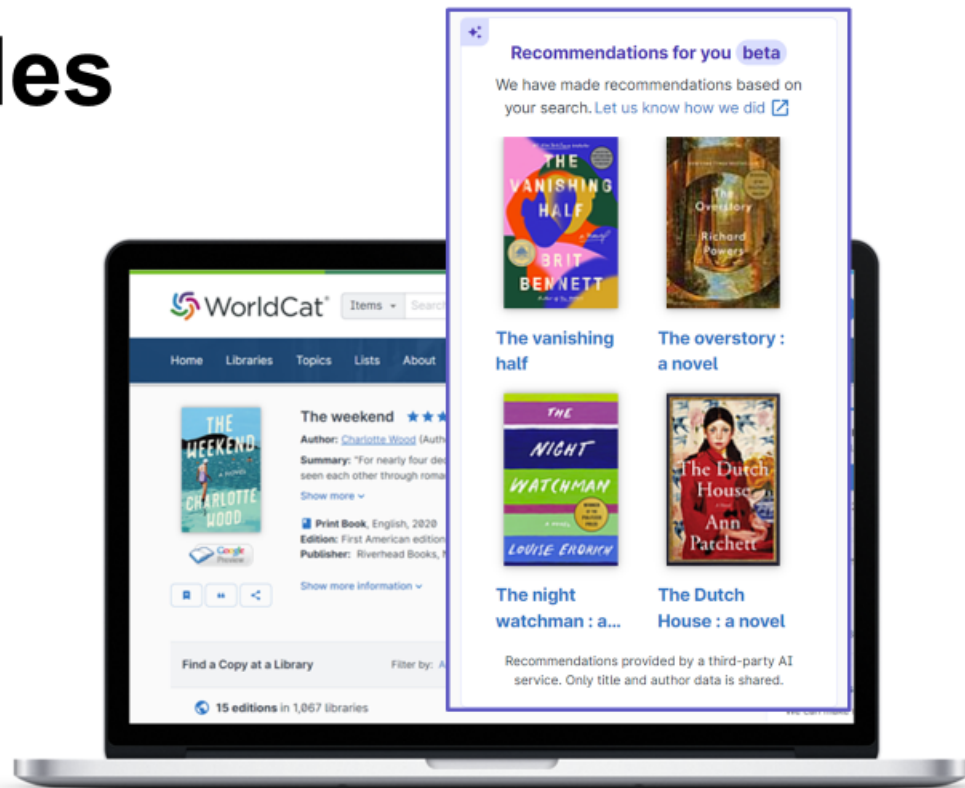
Technology approach: LLM

Hallucination check: WorldCat

Impact: 2.5 more titles viewed

Average pub'n date clicked: 2013

Works better for fiction, popular non-fiction vs. niche areas



High-quality metadata makes collections more discoverable

Quality improvement by merging duplicate records

32M+

new bibs created
annually

20%

identified as
duplicates using
classic string
matching

Very different records describing the same instance

	Record 1	Fields	Record 2
<input type="checkbox"/>	cam a 3	leader	cam a M
<input type="checkbox"/>	504048055	c001	83566108
<input type="checkbox"/>	900823s1900 ii 000 0 eng d	c008	931116s1900 ii 000 0 eng d
<input type="checkbox"/>	\$a 003545560 \$2 Uk	d016	Missing Entry
<input type="checkbox"/>	\$a UKMGB \$b eng \$c UKMGB	d040	\$a HLS \$b eng \$c HLS
<input type="checkbox"/>	\$a Suryanarain Row, Bangalore, \$d 1856-	d100	\$a Row, Banglore Suryanaraina.
<input type="checkbox"/>	\$a An Introduction to the Study of Astrology, in the light of physical sciences ... Third edition.	d245	\$a An introduction to the study of astrology, \$b in the light of physical sciences.
<input type="checkbox"/>	Missing Entry	d250	\$a 3d ed.
<input type="checkbox"/>	\$a Pp. ii. 57. Royal Victoria Press: \$b Madras, \$c 1900.	d260	\$a Madras, \$b K. Krishnaswami Ayar, \$c 1900.
<input type="checkbox"/>	\$a 8°	d300	\$a pages (4), ii, 57
<input type="checkbox"/>	\$a text \$b txt \$2 rdacontent	d336	\$a text \$b txt \$2 rdacontent
<input type="checkbox"/>	\$a unmediated \$b n \$2 rdamedia	d337	\$a unmediated \$b n \$2 rdamedia
<input type="checkbox"/>	Missing Entry	d338	\$a volume \$b nc \$2 rdacarrier
<input type="checkbox"/>	Missing Entry	d776	\$i Online version: \$a Row, Banglore Suryanaraina. \$t Introduction to the study of astrology. \$b 3d ed. \$d Madras, K. Krishnaswami Ayar, 1900 \$w (OCoLC)902781618

 Green box denotes identical strings in MARC record

Very similar records

describing
different instances

	Record 1	Fields	Record 2
<input type="checkbox"/>	cam a Ma	leader	cam a Ma
<input type="checkbox"/>	926921369	c001	926922235
<input type="checkbox"/>	960808s1958 gw 000 0 ger d	c008	960808s1958 gw 000 0 ger d
<input type="checkbox"/>	\$a SHS \$b eng \$c SHS	d040	\$a SHS \$b eng \$c SHS
<input type="checkbox"/>	\$a Storm, Theodor, \$d 1817-1888.	d100	\$a Storm, Theodor, \$d 1817-1888.
<input type="checkbox"/>	\$a Works	d240	\$a Works
<input type="checkbox"/>	\$a Werke : \$b Gesamtausgabe / \$c hrg. und eingeleitet von Hermann Engelhard. Bd. 1, Gedichte, Märchen, Novellen.	d245	\$a Werke : \$b Gesamtausgabe / \$c hrg. und eingeleitet von Hermann Engelhard. Bd. 2, Novellen.
<input type="checkbox"/>	\$a Stuttgart : \$b Cotta, \$c 1958.	d260	\$a Stuttgart : \$b Cotta, \$c 1958.
<input type="checkbox"/>	\$a text \$b txt \$2 rdacontent	d336	\$a text \$b txt \$2 rdacontent
<input type="checkbox"/>	\$a unmediated \$b n \$2 rdamedia	d337	\$a unmediated \$b n \$2 rdamedia
<input type="checkbox"/>	\$a Engelhard, Hermann.	d700	\$a Engelhard, Hermann.
<input type="checkbox"/>	\$a Gedichte, Märchen, Novellen.	d740	\$a Novellen.

Green box denotes identical strings in MARC records

Deduplication using machine learning

Combining different methods

Use **coded fields** to exclude records on general terms like language

Use **MinHash** to create a list of pairs of potential duplicates

Use **labelling tool** to manually label subset of pairs by experts

Use **Gradient Boosting model**

- Train model with labelled pairs
- Apply model to candidate pairs

New deduplication process—results

Conservative approach

Recognized 5.1M pairs of duplicates
(in addition to existing process)

Confirmed 97% of GB model
decisions with manual spot checks

Handled actual merging of duplicates
with normal merge processes

Can unmerge, if false positive is found

Work in progress — more to come





Hanging Together

the OCLC Research blog

Scaling de-duplication in WorldCat

Balancing AI innovation with cataloging care

Photo by Bimal Rajapatirana on Unsplash

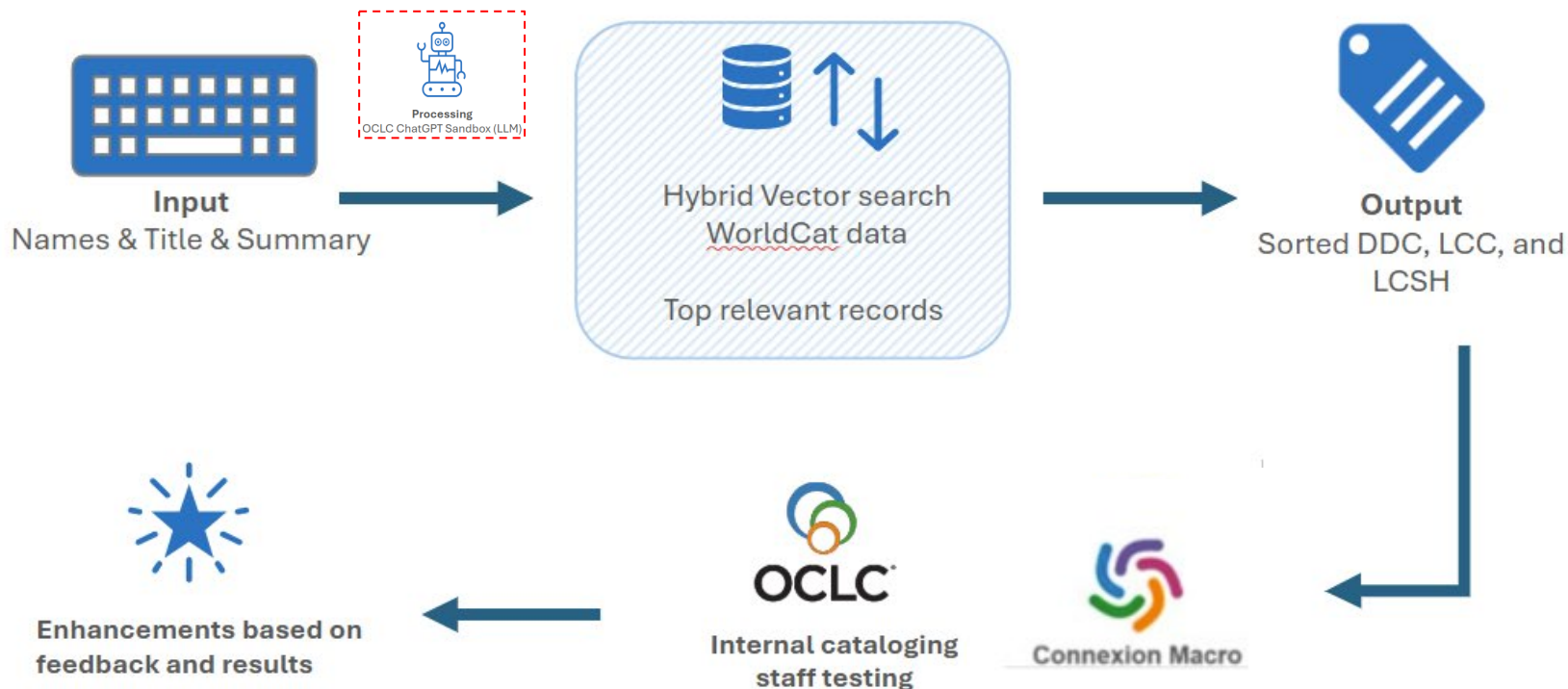


Enriching records with AI for better discovery

- Subject analysis and classification accounts for 70-80% of time for resource description
- Average time for record creation in MARC
 - Copy cataloging: avg. 20 minutes / record
 - Original cataloging: avg. 40 minutes / record
- Predicting subjects and classification can accelerate flow of materials to users



Iterative experimentation



020		0688060692 #q (pbk.)
020		9780688060695 #q (pbk.)
043		n-us---
050	0 0	CT275.P648 #b A3 1984 Guidebook
082	0 0	917.304/92 #2 20
096		917.3 P672zd
090		#b
049		ZMZA
100	1	DiSanto, Ronald L.
245	1 0	Guidebook to Zen and the art of motorcycle maintenance / #c Ronald L. DiS.
250		1st ed.
260		New York : #b W. Morrow, #c ©1990.
300		407 pages : #b illustrations, map : #c 25 cm
336		text #b txt #2 rdacontent
337		unmediated #b n #2 rdamedia
338		volume #b nc #2 rdacarrier
504		Includes bibliographical references (pages 338-357) and index.
520		When Robert Pirsig's Zen and the Art of Motorcycle Maintenance was first published, it was a sensation. It was the first book to introduce the concept of "Zen" to the general public. Chris, and their month-long motorcycle odyssey from Minnesota to California, and, eventually, enlightenment. Ronald DiSanto and Thomas Stearns Robert Pirsig, they have written a fascinating reference/companion to the original book. It contains background material, insights, and perspectives the authors provide, it has been a best-seller for years.
600	1 0	Pirsig, Robert M. #t Zen and the art of motorcycle maintenance.
600	1 0	Pirsig, Robert M.
600	1 0	Pirsig, Robert M. #x Travel #z United States.
650	0	Fathers and sons #z United States .
650	0	Philosophy and civilization .

OCLC AI Enrichment

DDC fields to choose from:

☐ 917.304/92 #2 20

☐ 111.1 #2 20

☐ 973.09/92 #a [B] #2 23

☐ 294.3

☐ 171 #a B #2 21

LCC fields to choose from:

☐ CT275.P648

☐ BJ1547.5 P648

☐ CT275.P648R53 2008

LCSH fields to choose from:

☒ Philosophy and civilization.

☒ Zen Buddhism and science.

☒ Essentialism (Philosophy)

☒ Values.

☒ Self.

☒ Conduct of life.

☒ Ego (Psychology)

☐ Fathers and sons

☐ Voyages and travels.

☐ Zen Buddhism.

NOTE: Fields that are both selected and disabled are already in the record.

OK Cancel

Ex. 3: Supercharging cataloging workflows

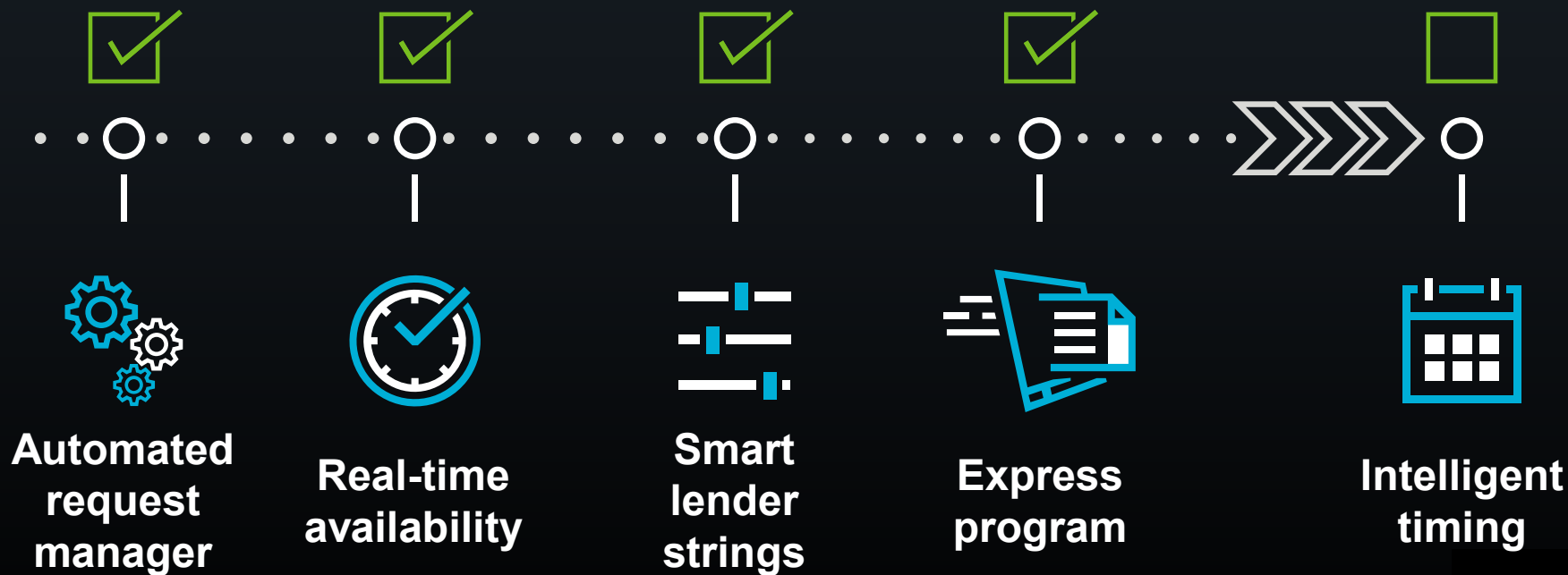
Next steps

- Complete second round of testing with internal cataloging staff at OCLC
- Pilot with libraries using Connexion this quarter



Exploring AI Opportunities in Resource Sharing

AI-driven global resource sharing for smarter, faster fulfillment



AI-driven global resource sharing for smarter, faster fulfillment

AI significantly reduces average turn around times



Automated request manager

50% reduction

in wait times

AI-driven global resource sharing for smarter, faster fulfillment

Items move faster through the network



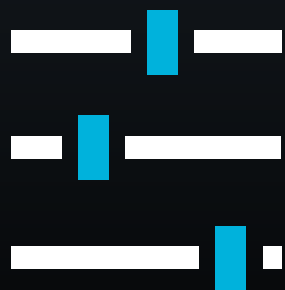
Real-time availability

1,089,000+

Items were automatically moved
to the next lender

AI-driven global resource sharing for smarter, faster fulfillment

AI significantly reduces average turn around times



Smart lender strings

36% reduction

in wait times

AI-driven global resource sharing for smarter, faster fulfillment

AI significantly reduces average turn around times



Express program

Fastest average

turnaround times in the
industry—ten hours

New! Intelligent timing

What is it?

Powered by AI and data—determines the actual times when digital requests are getting filled

Finds lenders across the globe that can fill a digital request the soonest

If you use automation to send copy requests to lenders, you are already using this



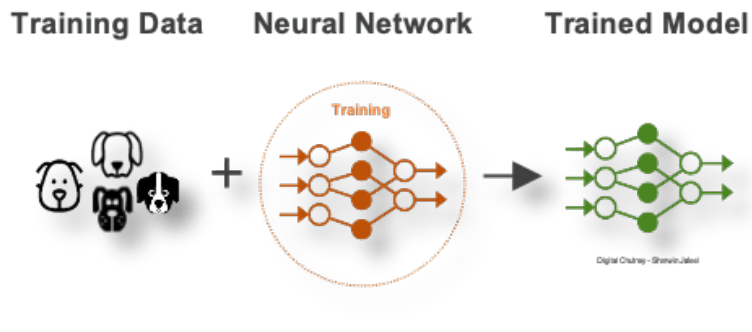
Exploring AI Opportunities: Entity Metadata

AI and Linked Data

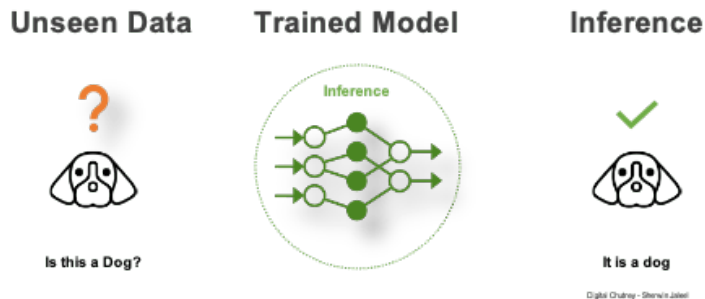
Converging technologies

Machine Learning – Two Steps

1) Training



2) Inference

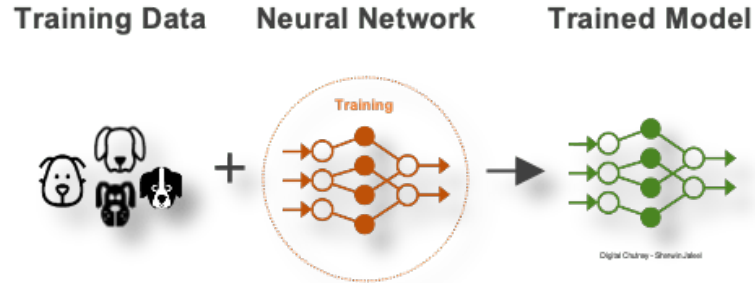


Machine Learning - Challenges

High data volume

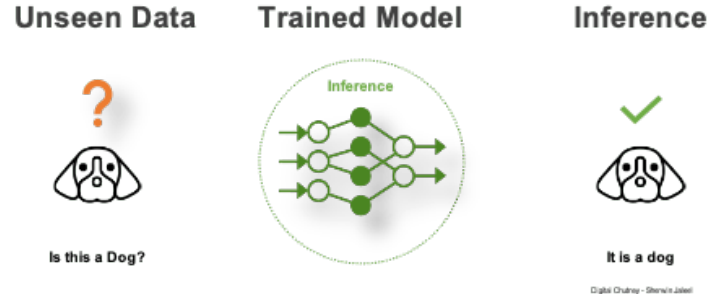
Data quality?

Data consistency?



Resource intensive

Time consuming

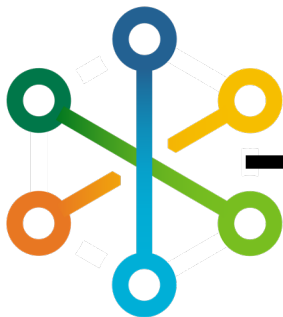


Resource intensive
if many users

Reasoning difficult

Hallucinations

Linked Data improves AI

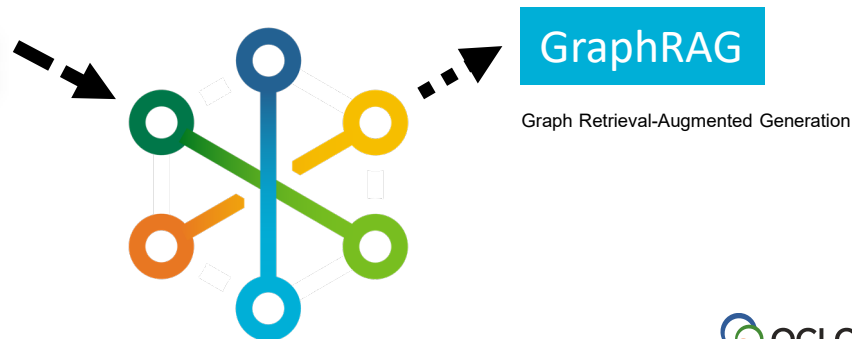


Structured training data:

- Higher data quality
- Shorter training time
- Smaller model size
- Much less resources

Structured inference context:

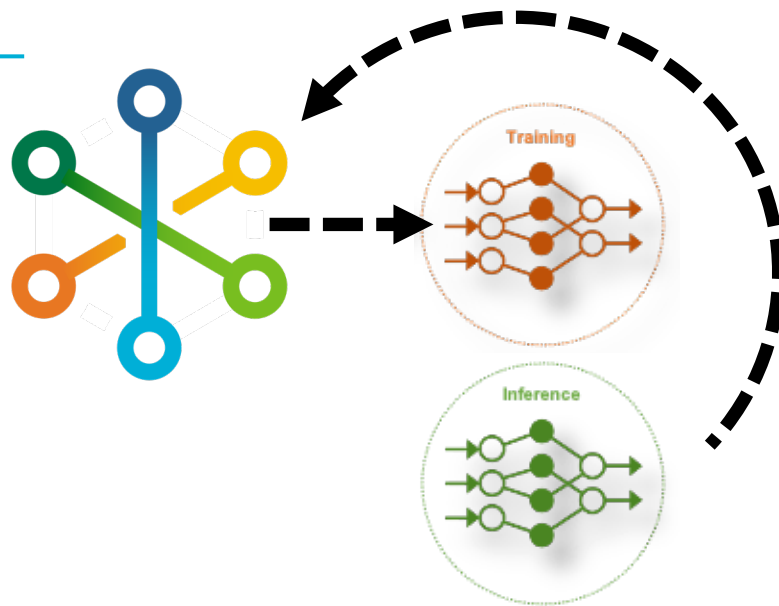
- Provides factual context, prevents AI hallucinations
- Traceable reasoning paths, explain AI conclusions
- Enables complex queries, beyond pattern recognition



AI improves Linked Data

Continuous improvement cycle

- Update knowledge graphs based on new information
- Predict missing links in knowledge graphs
- Extracts entities and links from unstructured text
- Recognizes conceptual similarities across different ontologies



The background features a complex network diagram with white nodes and lines on a light blue gradient. In the top right corner, there is a decorative graphic consisting of thick, colored lines (green, blue, orange, yellow) and large circular nodes in orange and blue.

Linked data: **Expanding library reach**

Connect library knowledge at scale

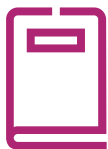
oc.lc/linkeddata



WorldCat[®]

Entities

Things instead of Strings



Works



Persons



Events



Places



Organizations

entities.oclc.org

OCCLC Meridian

Create, curate, and
connect linked data
in WorldCat Entities

oclc.org/meridian



Dewey Decimal Classification

Unlocks the power of Dewey numbers
via the creation of URIs

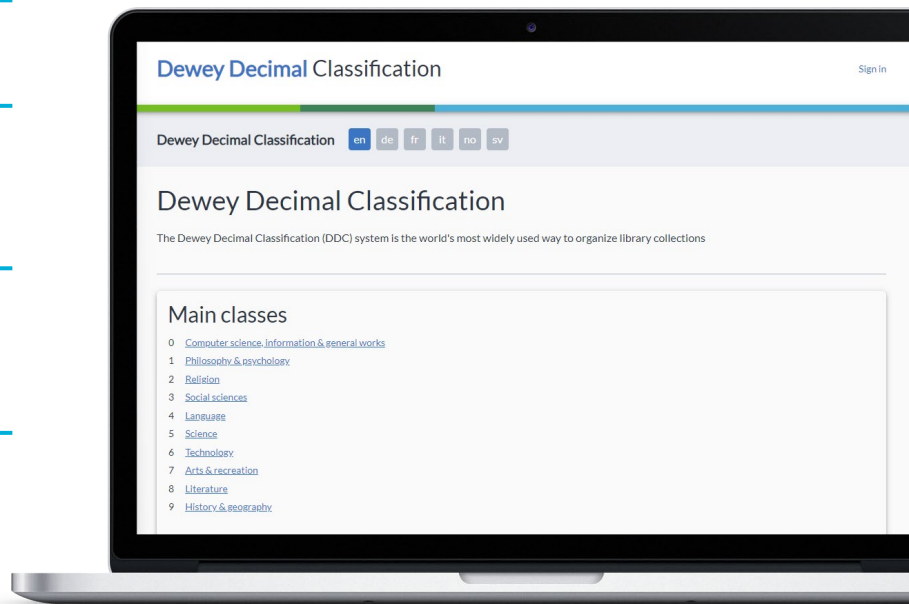
Forms the foundation for Concept entities

Provides subject classifications to
Works entities in WorldCat Entities

Creates a layer of new relationships
for knowledge graphs

Connects Dewey classifications
to FAST topical headings

oclc.org/dewey-linked-data



WorldCat[®] **Entities** in MARC records

Extend MARC cataloging towards knowledge work

Insert entity identifiers (URI) within existing workflows

650		0	Institutional repositories \$z United States \$v Case studies .
650		7	Institutional repositories. \$2 fast \$0 (OCoLC)fst01740486
700	1		Mixer, Jeffery , \$e author. \$1 https://id.oclc.org/worldcat/entity/E39PBJtRJyKHh8gwxXj3JQ4cyd
700	1		McMillian, Ciara .

Strengthen and evolve the
national communities

...**AND** at the same time

participate in
global exchange

SyndeoTM

Συνδέω (syndéo) = to connect

National metadata management differs

National Metadata Management Practices

- National metadata management model
- National metadata format
- National metadata format extensions
- National collections and special sources
- National quality control

National Authority File Management

- Language specific authority files

National Metadata Hub

- Metadata aggregation
- Metadata mass changes on large scale

Syndeo™

National Metadata Management Practices

- National metadata management model
- National metadata format
- National metadata format extensions
- National collections and special sources
- National quality control

National Authority File Management

- Language specific authority files (e.g. Māori, French Canadian)

National Metadata Hub

- Metadata aggregation (e.g. NII Japan)
- Metadata mass changes on large scale

Tailor-made solution for each

Syndeo for bespoke linked data

Create local, national,
and regional entities

Build on local, national,
and regional authority files

Allow language specific entities

Allow topically specific Entities



A Syndeo library always retains full control of their linked data entities, while allowing all member libraries to benefit through WorldCat.

Connect to other entities



WorldCat® Entities

OCLC Research

OCLC Research

- 40 years: thought leadership on key issues for libraries
- 20 years: community programming to advance librarianship
 - WebJunction: professional development and skill-building for staff in public libraries
 - Research Library Partnership: peer-to-peer learning and leadership development for functional specialists in research libraries
- Combined capacity accelerates and scales library impact

Recent and Upcoming OCLC publications

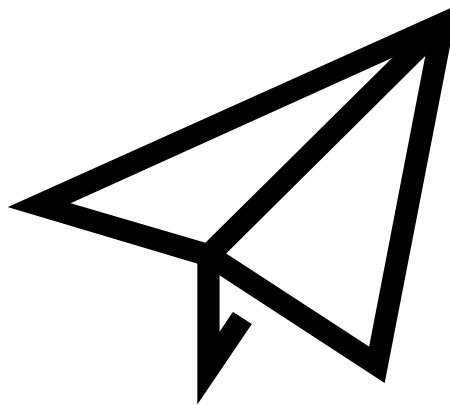
- ▣ Migliorare la scoperta dell'open access per gli utenti delle biblioteche accademiche
- ▣ Stewarding the Collective Collection: **An Analysis of Print Retention Data in the US and Canada**
- ▣ Stewarding the Collective Collection: **Data and Tools for Shared Print Workflows** – forthcoming
- ▣ **The Library Beyond the Library** - forthcoming



Do you want to receive the latest OCLC research reports, events, products and news?

Update your email preferences at:

oclc.org/mail



**Because
what is
known must
be shared.®**

Thank you

Axel Kaschte, PhD

Product Strategy Director,

EMEA & APAC

axel.kaschte@oclc.org