



香港中文大學
The Chinese University of Hong Kong

Academic Libraries in Action: Collaborative Efforts to Advance AI Literacy in Hong Kong, China

攜手前行：中國香港學術圖書館發展 AI 素養的角色與展望

Lily Ko
Head, Research & Learning Support
The Chinese University of Hong Kong Library
China

31 October 2025

My Background



Collaborative Approach

International Federation of Library Associations and Institutions (IFLA)

Hong Kong Library Association (HKLA)

Joint University Librarians Advisory Committee (JULAC)

Chinese University of Hong Kong Library (CUHK Library)



IFLA Trend Report 2024 趨勢報告



International
Federation of
Library
Associations and Institutions

First edition published on 30 September 2024, a revised one was issued on 30 January 2025.

<https://repository.ifla.org/items/ae4dfcc0-8def-4318-8c4c-7f0507d15609>



IFLA Trend Report 2024 趨勢報告

Trends	IFLA Trend Report 2024
Trend One	Knowledge practices are changing
Trend Two	AI and other technologies are transforming society
Trend Three	Trust us being renegotiated
Trend Four	Skills and abilities are becoming more complex
Trend Five	Digital technologies are unevenly distributed
Trend Six	Information systems are using more resources
Trend Seven	People are seeking community connections



IFLA Academic and Research Libraries Section



International
Federation of
Library
Associations and Institutions

[WHO WE ARE](#)

[WHAT WE DO](#)

[NEWS](#)

[EVENTS](#)

[RESOURCES](#)

[JOIN US](#)

[SEARCH](#)

[DONATE](#)



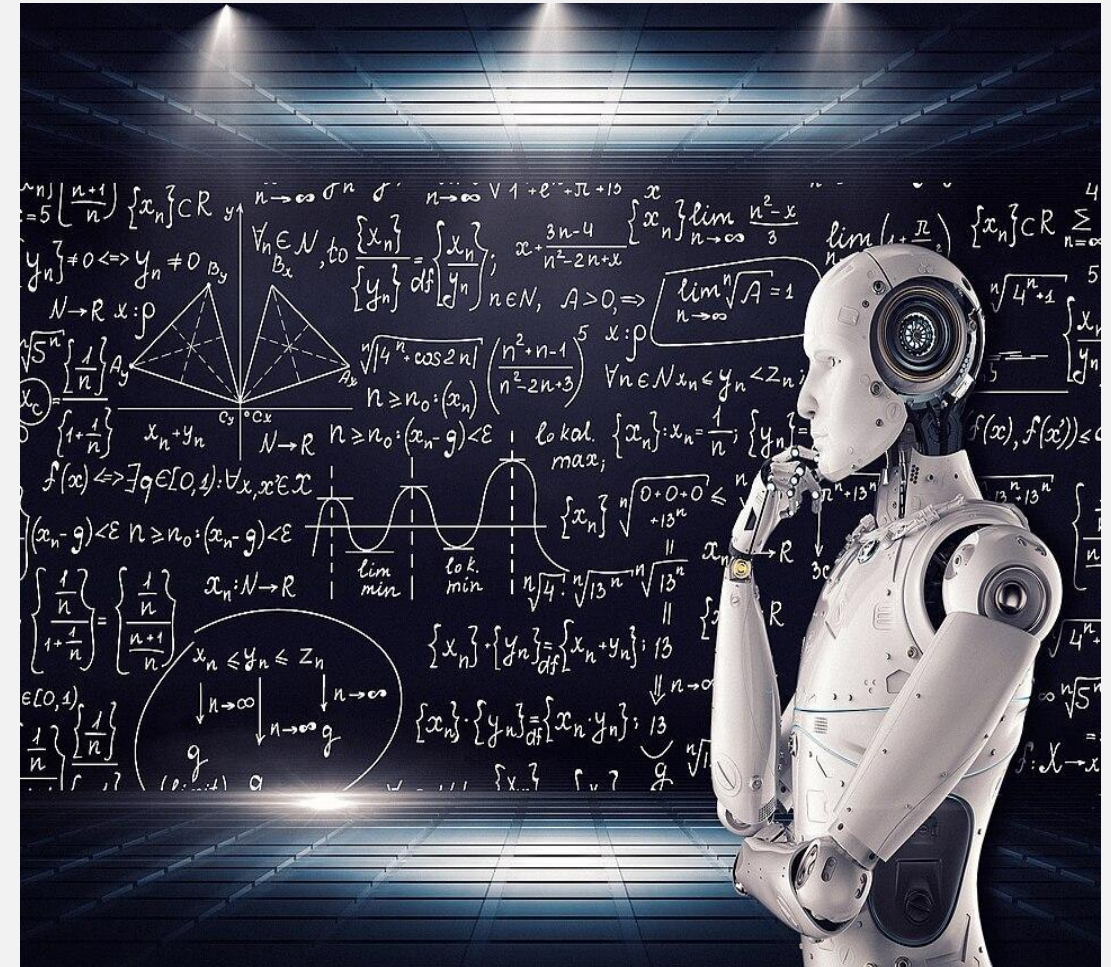
- Country Trends Report

Trends	IFLA ARL Country Trend Report 2024	IFLA Trend Report 2024
Trend One	Open Access and Open Science Initiatives	Knowledge practices are changing
Trend Two	Artificial Intelligence (AI) and Technology Integration	AI and other technologies are transforming society
Trend Three	Collection Development and Resource Sharing	Trust us being renegotiated
Trend Four	Professional Development and Staff Retention	Skills and abilities are becoming more complex
Trend Five	Collaboration and partnerships	Digital technologies are unevenly distributed
Trend Six	Cultural and Social Initiatives	Information systems are using more resources
Trend Seven		People are seeking community connections

AI Literacy

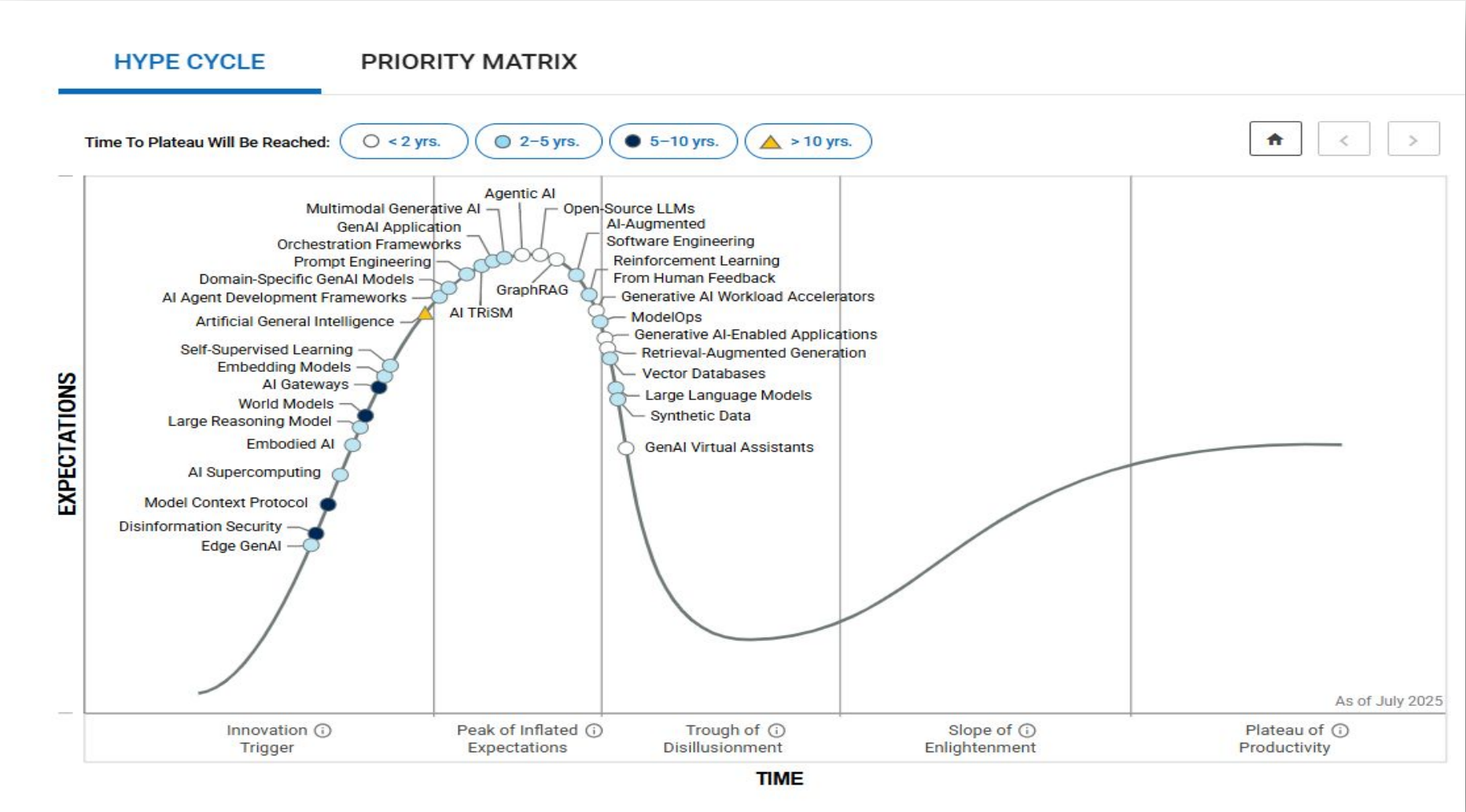
"AI literacy as a set of competencies that enables individuals to critically evaluate AI technologies; communicate and collaborate effectively with AI; and use AI as a tool online, at home, and in the workplace."

Long, D., & Magerko, B. (2020, April). What is AI literacy? Competencies and design considerations. In *Proceedings of the 2020 CHI conference on human factors in computing systems* (pp. 1-16).




Source: a work by mikemacmarketing from
<https://www.flickr.com/photos/152824664@N07/30212411048/>

Hype Cycle for Generative AI, 2025



Source: Gartner



Case Study 1: Hong Kong Library Association – Professional Development Programme



Hong Kong
Library Association
香港圖書館協會

- Established in 1958
 - Academic Libraries
 - Public Libraries
 - School Libraries
 - Special Libraries



HKLA Professional Development Committee Talks

- Focus on AI
- Starting from May 2025
- Explore the evolving role of AI and emerging technologies in the library landscape.
- Open to HKLA and non-HKLA members
- Recordings + Powerpoints
- E-certificate



Navigating the Future of Libraries: AI and Emerging Technologies

**24 MAY
2025**

10:00 – 12:00



**TRANSDISCIPLINARY DISCOVERY COMMONS (TDDC),
LEVEL 2, AU SHUE HUNG MEMORIAL LIBRARY,
HONG KONG BAPTIST UNIVERSITY**



ONLINE VIA ZOOM



Mr. Christopher Chan

University Librarian
Hong Kong Baptist University



Mr. Benjamin Meunier

University Librarian
The Chinese University of Hong Kong



Mr. Ryun Lee

Head, Digital Initiatives
The Chinese University of Hong Kong



REGISTER NOW



31 October 2025



Chan, C., & Meunier, B. (2025). Navigating the AI Revolution: Librarian Perspectives in China's Greater Bay Area. *New Review of Academic Librarianship*, 1–21. <https://doi.org/10.1080/13614533.2025.2466513>



Survey Overview (2023)

- Conducted in research libraries across China's Greater Bay Area
- **107 respondents**: Hong Kong: 67, Guangdong: 33, Macau: 7



Attitudes Toward AI Tools

Positive: 61%, Neutral: 34%, Negative: 5%



Importance of Library Support for AI Tools

- Extremely important: 15%
- Very important: 31%
- Moderately important: 39%
- Not important: 15%



Key Needs Identified

- Staff training on AI tools
- A forum for experience sharing in AI applications

AI Tools for Literature Review: A Practical Guide for Librarians

27 JUNE 2025

 **3:00 – 5:00 PM**

 **ONLINE VIA ZOOM**



Ms. Aster Zhao

Research Support Librarian and
Engineering Librarian

The Hong Kong University of
Science and Technology



REGISTER NOW 

31 October 2025



Hong Kong
University of Science and Technology



香港科技大學
THE HONG KONG
UNIVERSITY OF SCIENCE AND TECHNOLOGY



李兆基圖書館



Zoom Webinar Series

LLMs Made Simple: Your Journey from Beginner to AI Application Builder

26
SEPTEMBER
(FRI)

**Setting Up and Deploying AI-Powered
Applications Locally with Ollama**
2:30 PM - 4:00 PM (HKT) | English

17
OCTOBER
(FRI)

**Deploying Generative AI with Azure
OpenAI Service and Hugging Face**
2:30 PM - 4:00 PM (HKT) | English

31
OCTOBER
(FRI)

**Getting Started with n8n: Create Your
First No-Code Application**
2:30 PM - 4:00 PM (HKT) | English



Mr. Lewis Li

Head of Library Instruction
and Reference Services

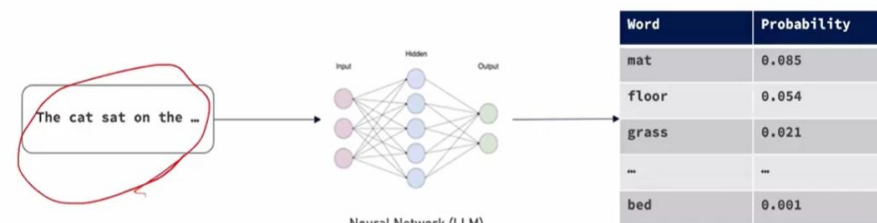
Run Run Shaw Library,
City University of Hong Kong



REGISTER NOW ➔

HOW GEN AI WORKS

Generative AI tools like ChatGPT rely on large language models to analyse input, predict contextually appropriate words, and produce human-like responses using its extensive training data.



OLLAMA

Company	LLM
OpenAI	GPT-5
Anthropic	Claude 4.1
xAI	Grok 5
DeepSeek	DeepSeek R1
Google DeepMind	Gemini 2.5 Pro
Microsoft	Phi-3


Embeddings: (Cat -> 0.056, ...)
Parameters: e.g. deepseek-v3.1:671b

```
File Edit Selection View Go ...
New File...
Select File Type or Enter File Name...
Text File Built-in Ctrl + N File
Python File Python
Jupyter Notebook Jupyter Support Notebook

system_prompt = "You are a customer service manager for a supermarket. Always respond in a helpful and friendly manner."
prompt = "Can I return a defective product?"

response = requests.post('http://localhost:11434/api/generate',
                          json={
                            "model": "llama2",
                            "prompt": f"{system_prompt}\n\n(prompt)",
                            "stream": False
                          })
print(response.text)

PROBLEMS OUTPUT DEBUG CONSOLE TERMINAL PORTS
(powershell) PS C:\Users\chihli\ollamaproj>
```


The background of the slide is a light blue surface with a network diagram. It consists of numerous small, colorful pushpins (green, blue, yellow, red, pink) connected by thin black lines, creating a complex web of connections. A large, semi-transparent orange rectangle is overlaid on the left side of the image, containing the title text.

Case Study 2: JULAC's Collaborative Effort in Evaluating AI Tools



Joint University Librarians Advisory Committee 香港特別行政區大學圖書館長聯席會 (JULAC)

- Established in 1967 by the Heads of Universities Committee (HUCOM).
- A forum to discuss, coordinate, and collaborate on library information resources and services among the libraries of the eight tertiary education institutions funded by the University Grants Committee <https://www.ugc.edu.hk/eng/ugc/index.html> (UGC) of the Hong Kong SAR Government

Member Libraries



The Chinese University of Hong Kong



City University of Hong Kong



The Education University of Hong Kong



Hong Kong Baptist University



The Hong Kong Polytechnic University



The Hong Kong University of Science and Technology

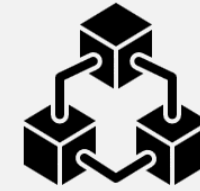


Lingnan University



The University of Hong Kong

JULAC



Principles of Cooperation

JULAC is evolving into a collaborative library consortium.

- Share smartly
- Do things together AND Do things once
- Do things to shared standards
- Improve user experience and discovery
- Contribute to the global community

JULAC Learning Strategies Committee

- JULAC Learning Strategies Committee
- To explore and maximize opportunities to advocate e-learning, information services and information literacy in Higher Education;
- To be a community of practice sharing best practice and experience on discoverability and e-learning strategies;
- To bring together JULAC Libraries to work collaboratively on educational technologies to enhance learning and discovery;
- To provide a forum for JULAC Libraries to share expertise and development on the issues as covered above.



Working Group on Evaluating AI Research Tools

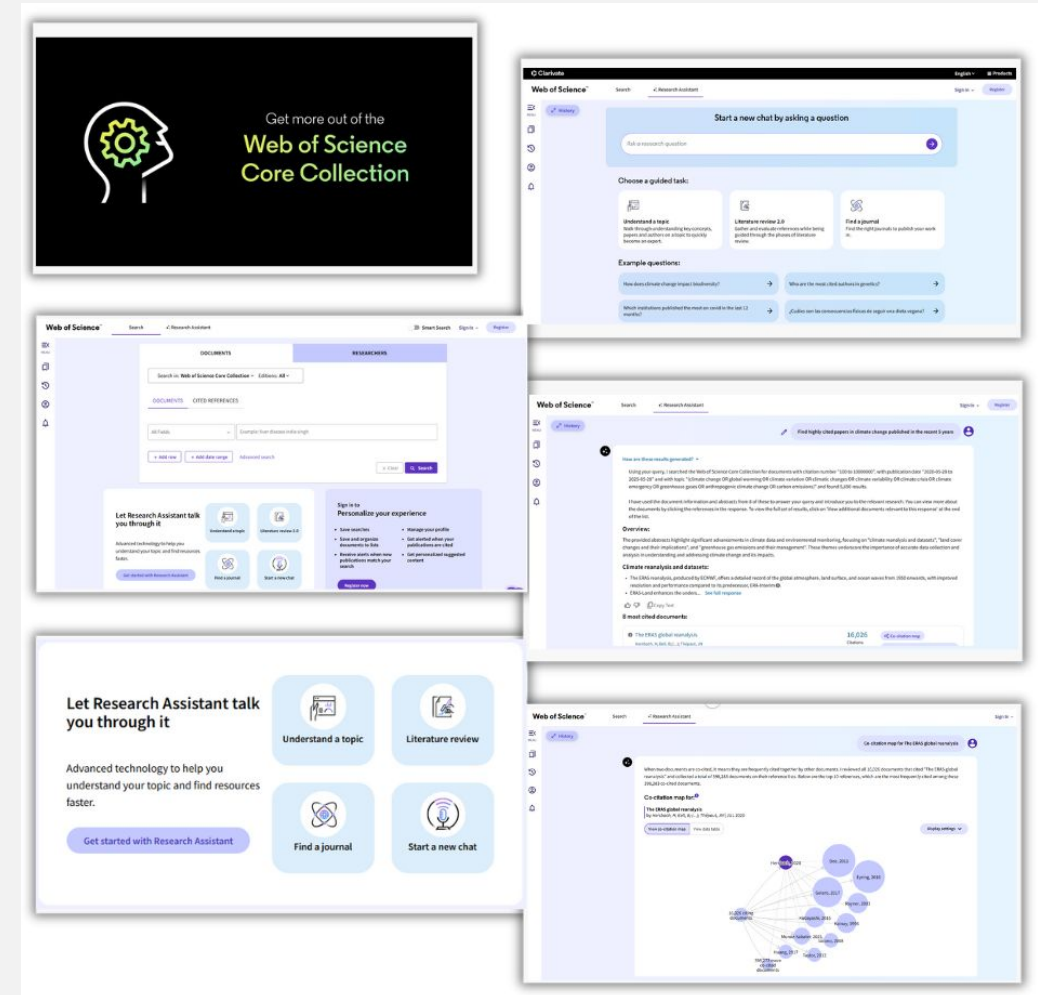
- Accessibility
- Pricing
- Data Sources and Coverage
- Search Capabilities
- Performance
- Output and Export Options
- Other Features
- Data Privacy and Ethics



Why Web of Science Research Assistant (1)



- **Accessibility**
 - **Integration with the existing platform**, i.e. Web of Science, which is already familiar to users.
 - Support Single-Sign On
- **Pricing:** Extra cost on top of Web of Science subscription
- **Data Sources and Coverage:** **Creditable Sources** from the Web of Science Core Collection
- **Search Capabilities:**
 - Support Boolean and natural language searching
 - Open Question, Literature Review, Topic Explorer



Why Web of Science Research Assistant (2)



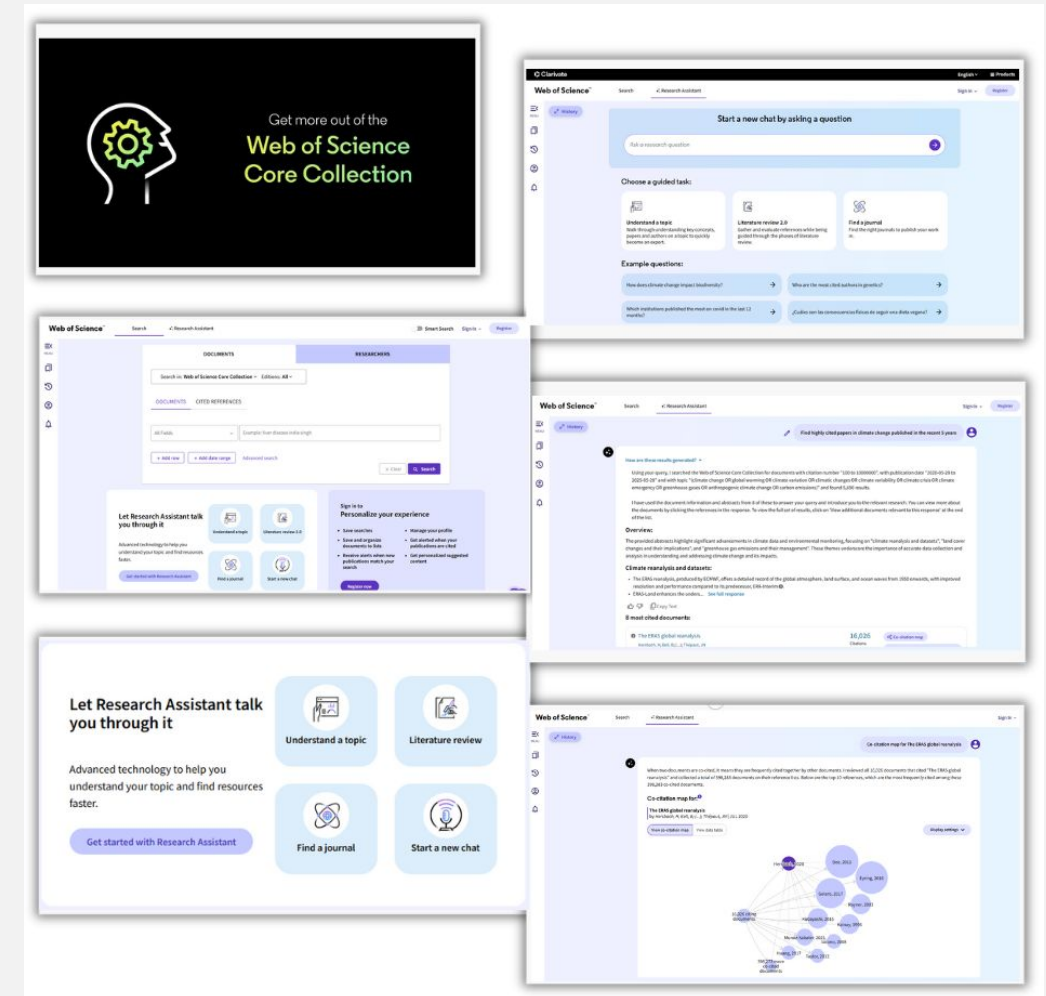
- **Key Features:**

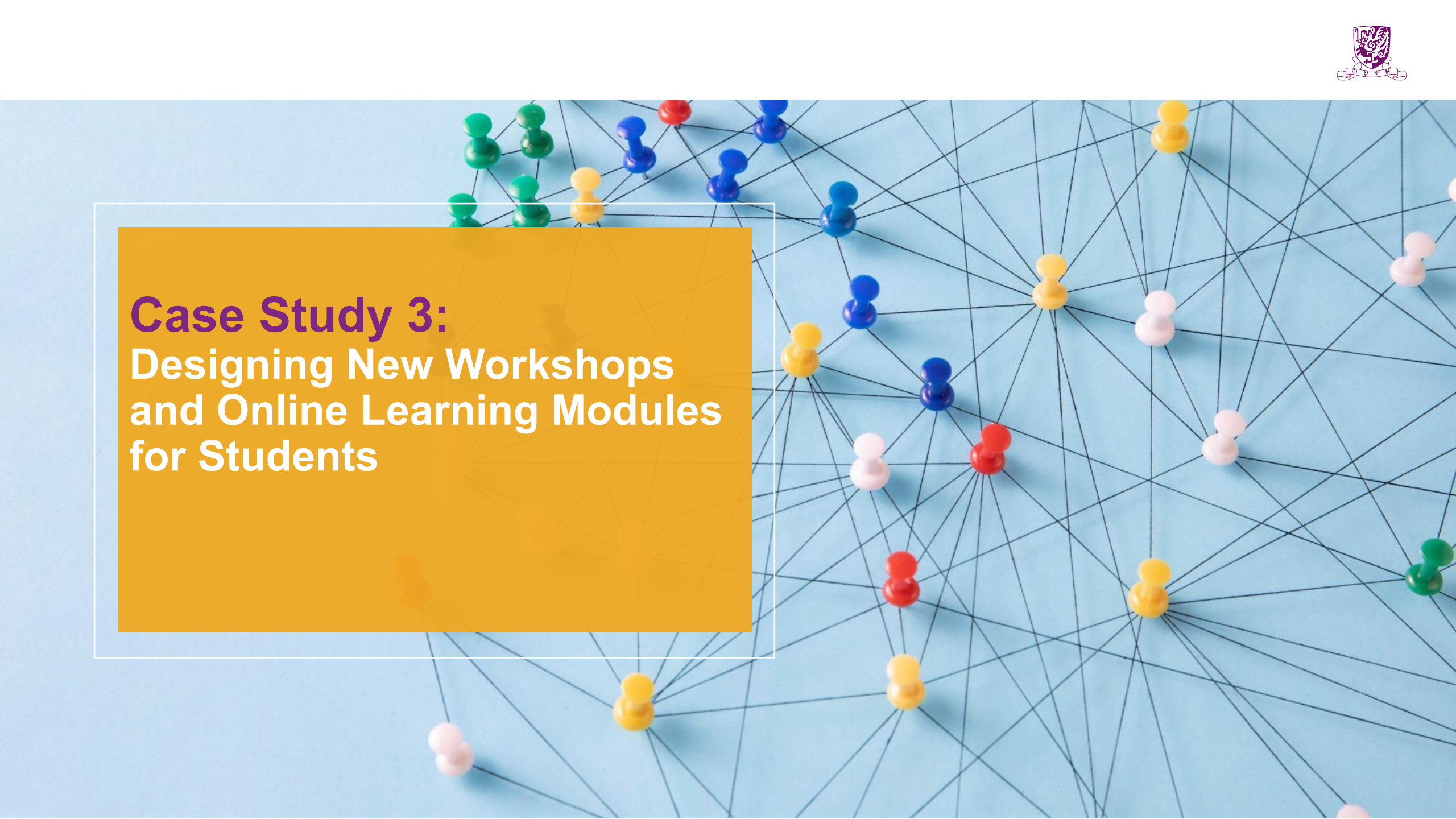
- **User-friendly interface** with customized search, integration, and output options
- **Transparency** in the how the information is generated
- **Visualization** features and **matrix analysis**

- **Data Privacy and Ethics:**

- comply with data privacy regulations and adhere to the evolving global AI legislation
- only the content that users themselves input into the query is transmitted to the LLM. No additional data is shared during this process, ensuring the protection of sensitive information.

<https://clarivate.com/academia-government/scientific-and-academic-research/research-discovery-and-referencing/web-of-science/web-of-science-research-assistant/>



The background of the slide is a light blue surface with a network diagram. Numerous colorful pushpins (green, blue, yellow, red, pink) are connected by thin black lines, creating a complex web of connections across the entire slide.

Case Study 3: Designing New Workshops and Online Learning Modules for Students

New Workshops Organized at CUHK Library in 2024/25

- Responsible Use of AI Tools & Best Practices for the course XXXX
- Using Generative AI Tools for Research: Ethics and Practical Concerns workshop for a core course for the Department of History RPG students
- GenAI Tools for Students: Exploring the Upside and Downside
- Scite: An AI Tool for Literature Search



Workshop Feedback



More time could be devoted to the **demonstration of the AI tools**. They're really useful!

The workshop is **useful**, particular for staff that need to do a lot of literature search. **I also like the hands-on activity, enhancing the learning outcome of this workshop.**



Hands-on

Go to the **Web of Science**
to find

Your Research Topic





My research topic:

Exploring Net-Zero Energy Design in University Libraries



Major Keywords:

- Net-zero energy
- University libraries, Academic libraries
- Energy-efficient design
- Sustainable architecture
- Green buildings
- Library building performance
- Renewable energy in libraries
- Smart building technologies

The Boolean Operators

AND

OR

NOT

DOCUMENTS

RESEARCHERS

Search in: Web of Science Core Collection ▾ Editions: All ▾

FIELD SEARCH

QUERY BUILDER

CITED REFERENCES

All Fields ▾

Example: liver disease india singh

net zero energy university libraries

+ Add row

+ Add date range

X Clear

Q Search

27 results from Web of Science Core Collection for:

net zero energy university libraries (All Fields)



Copy query link

+ Add Keywords

Quick add keywords:



+ energy consumption

+ machine learning



27 Documents

You may also like...

Analyze Results

Citation Report

Create Alert

Refine results

Export Refine

Search within results...

Quick Filters

- ☐ Highly Cited Papers 2
- ☐ Hot Papers 1
- ☐ Review Article 3
- ☐ Open Access 15
- ☐ Enriched Cited References 10

Publication Years ⓘ

- ☐ Show Final Publication Year
- ☐ 2025 8
 - ☐ 2024 4
 - ☐ 2023 6
 - ☐ 2022 2
 - ☐ 2021 1

See all >

Document Types

- ☐ Article 17
- ☐ Proceeding Paper 7
- ☐ Review Article 3

☐ 0/27

Add To Marked List

Export ▾

Sort by
Relevance ▾

< 1 of 1 >

☐ 1 Healthy and Energy-saving Design in a University Library

5
References

Huang, YK and Shih, YC
8th Thermal and Fluids Engineering Conference (TFEC)
2023 | 8TH THERMAL AND FLUIDS ENGINEERING CONFERENCE , pp.1723-1725

Enriched Cited References

To meet the standards of Net Zero Energy Buildings, many researchers focus on coordinating the indoor thermal comfort, indoor air quality, and energy consumption of air-conditioning (AC) systems. The objective of this study is to take a university library as the research category to search for the optimized AC operating point among the air supply speed, t ... Show more ▾

FindIt@CUHK Library Full Text at Publisher ...

Related records

☐ 2 Empowering net zero energy grids: a comprehensive review of virtual power plants, challenges, applications, and blockchain integration

1
Citation
164
References



Bedi, A; Ramprabhakar, J; (...); Hameed, IA
Mar 21 2025 | DISCOVER APPLIED SCIENCES ▾ 7 (4)

Energy is the basic prerequisite of any industry, but global warming, climate change, and pollution are increasing due to digitization and industrialization. Rising electricity demand, combined with the integration of electric vehicles, has made it increasingly challenging to rely solely on conventional centralized power systems. To meet this curr ... Show more ▾

FindIt@CUHK Library Free Full Text from Publisher View Full Text on ProQuest ...

Related records

☐ 3 Energy Performance, Comfort, and Lessons Learned from an Institutional Building Designed for Net Zero Energy

6
Citations
31
References

Dermardiros, V; Athienitis, AK and Bucking, S
ASHRAE Winter Conference
2019 | ASHRAE TRANSACTIONS 2019, VOL 125, PT 1 125 , pp.668-681

Chat history

MENU

Exploring Net-Zero Energy Design



✦ Accelerate Your Research with a Smart Assistant

Choose an agentic AI guide to help you advance your research goals



Topic Explorer

Explore topics, identify related subtopics, and visualize trends.



Literature Review

Synthesize the literature, uncover research gaps and hotspots, and formulate hypotheses.



Find a Journal

Match your manuscript or topic to relevant, trusted journals.

Have a research question?

Exploring Net-Zero Energy Design in University Libraries

Example questions:

How does climate change impact biodiversity?



Who are the most cited authors in genetics?



Which institutions published the most on covid in the last 12 months?



¿Cuáles son las consecuencias físicas de seguir una dieta vegana?



Can you find recent studies on super-resolution microscopy?



线粒体在癌症中扮演什么角色?





How are these results generated? ▲

How are these results generated? ▼

Using your query, I searched the Web of Science Core Collection for documents with topic "(net-zero energy OR net zero energy OR zero energy OR zero-energy design OR energy-efficient design OR energy efficiency OR sustainable design OR green building OR green design OR passive design OR renewable energy OR energy optimization) AND (university libraries OR academic libraries OR campus libraries OR educational libraries OR library buildings OR library facilities OR library design OR library architecture)" and found 4,793 results.

I have used the document information and abstracts from 25 of these to answer your query and introduce you to the relevant research. You can view more about the documents by clicking the references in the response. To view the full set of results, click on 'View all results in Web of Science Core Collection' at the end of the list.

- Advanced simulation tools and optimization algorithms are essential for enhancing the energy performance of buildings, particularly in optimizing HVAC systems and natural lighting 🧑🏫🔧.
- The application of performance-based design approaches allows for ... [See full response](#)

Copy Text

25 referenced documents:

1 Research on the Optimization Design of the Atrium Space Form in University Libraries Based on the Coupling of Daylighting and Energy Consumption

Bai, WQ; Guo, WH; (...); Zhang, S

SEP 2024 | BUILDINGS ▼

Co-citation map

Enriched cited references map

CITATION NETWORK

2

Citations

43

References

2 An Approach for Teaching the Design of Net Zero-Energy Buildings

Ahmed, M

2023 | PROCEEDINGS OF THE CANADIAN SOCIETY OF CIVIL ENGINEERING ANNUAL CONFERENCE 2022, VOL

1, CSCE 2022

CITATION NETWORK

0

Citations

12

References

3 Application of Advanced Computational Building Performance Analysis Tools in the Architectural Design of Net-Zero Energy Buildings - Case Study.

CITATION NETWORK

Search Terms:

Africa public space



Topic Explorer

Explore topics, identify related subtopics,
and visualize trends.



africa public space



What is public space in Africa?

Public space in Africa encompasses a complex and evolving set of physical and social environments where people interact, express identities, and negotiate power in urban and rural settings. These spaces include streets, parks, transport systems, markets, and digital forums, each shaped by unique historical, cultural, and political contexts across the continent. African public spaces are influenced by legacies of colonization, postcolonial transformation, and ongoing debates around democracy, inclusion, gender, and decolonization. They function not only as venues for daily life, commerce, and leisure, but also as arenas for contesting rights, citizenship, and social justice. Issues such as governance, security, accessibility, and cultural meaning are central, with contemporary challenges including spatial injustice, exclusion, and competing interests. Recent research also highlights the role of public space in health, social well-being, and urban design, calling for more inclusive, culturally resonant, and sustainable approaches to planning and management.

Identified topics and subtopics:

- **Public space in Africa** (urban design, inclusion and exclusion, governance)
- **Decolonization of public space** (symbolism and memory, Africanization, public art)
- **Gender and public space** (gendered exclusion, rights to the city, feminist movements)
- **Health and public space** (public health initiatives, occupational health, urban greening)
- **Security and governance** (private security, policing, management)
- **Performance and protest in public space** (political mobilization, performance culture, activism)
- **Digital and mediated public space** (diasporic media, radio, online activism)
- **Religion and public space** (interreligious dialogue, colonial interventions, community involvement)

Related topics:

- **Urban transformation and design:** The transformation of African public space is deeply tied to urban design, which both reflects and shapes societal changes, contestations, and visions for future public life (WOS:000368502800006).
- **Spatial justice and exclusion:** Studies reveal how spatial (in)justice manifests through exclusion based on gender, race, or ability, emphasizing the need for intersectional and context-aware urban planning (WOS:001268893400001).
- **Health, well-being, and sustainability:** There is growing recognition of how the design, management, and accessibility of public space influence public health, social cohesion, and environmental sustainability (WOS:001418762000001).

References:

View 50 referenced documents



Would you like to dive deeper into related topics? I can also help you find review articles, identify top authors, leading institutions in this area, or generate visualizations such as topic maps, document trends over time, word clouds or country/geographic map. Please let me know your preference.



Copy Text



Download as PDF



Export references as CSV

Function	Search Application & Use Case	Advantages
Literature Review	Systematically organizes literature, provides a comprehensive overview of the topic, identifies research gaps, hotspots, and helps formulate hypotheses	Quickly grasp the literature landscape, discover research gaps and trending topics, and assist in hypothesis formation
Open Question	Explores under-researched issues and generates more diverse and broad questions, not limited to a single discipline, e.g., can ask basic analysis or statistical questions	Helps inspire research ideas and avoid blind searching
Understand a Topic	Quickly get familiar with an unfamiliar field and grasp key concepts and core context	Focuses on seminal papers, combined with abstracts, citations, and co-citation analysis, providing a clear conceptual framework and core literature connections

2025 Web of Science Research Assistant Online Quiz

Event runs until November 30th, 2025

We invite you to participate in the 2025 Web of Science Research Assistant online quiz with prizes. Let's learn about the Web of Science Research Assistant together and win big rewards!

Eligible Participants: For faculty, researchers, students, and staff from institutions with access to the Web of Science Research Assistant—either via subscription or trial.

Instructions:

- 1 Access the Web of Science platform only through the library webpage, or directly connect to www.webofscience.com within the school's IP range.
- 2 Please answer five questions. If all answers are correct and you provide your contact information, you will be eligible to participate in the lucky draw.
- 3 Please answer all five questions.






Scan this QR code
to go to the Quiz



Announcement of Winners:

After the list of winners is published on the website, winners will be notified by email about their prizes before **December 15, 2025**.

Prizes:

				
JBL Wireless Headphone (1 Winner)	Portable Table Fan (2 Winners)	Wireless Earbuds (10 Winners)	Wireless Charger (10 Winners)	6 in 1 Desk Collector (10 Winners)

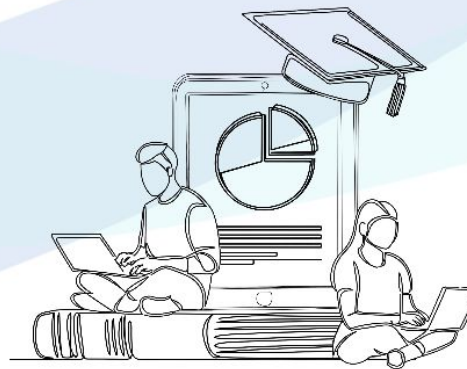


Further activity: Encourage students to participate in this online quiz to know more about Web of Science Research Assistant



Library Essentials for All Disciplines

Subject Information Search • Academic Honesty •
Getting Published



Module 1

Basic Research Information Skills



Module 2

Subject-specific Research Information Skills



Module 3

Citation Management Tools



Module 4

Academic Publishing Basics



[Pre-module survey](#)



Integrates **Multiple** Aspects into a **Single** Platform

Module 1

Basic Research Information Skills



Module 2

Subject-specific Research Information Skills



Module 3

Citation Management Tools



Module 4

Academic Publishing Basics



Research Information Skills
(Basic & subject-specific)

Managing References

Academic Publishing



In-depth Interview (2023) Prior to Developing LEAD & Pilot Run by Students (2025) Before Official Launch

Number of Participants	(10 undergraduates and 10 postgraduates)
Purpose	In-depth interview (2023): Evaluated prior online courses <i>Research Smart</i> and <i>Information Literacy Online Courses (Info Lit)</i> for future development Pilot run by students (2025): assessed LEAD for final revision
Evaluation methods	Pre-interview survey & written interview
Types of Questions	Rating (likert scale) & open-ended questions

Notes: Before In-depth Interview (2023), *Research Smart* was **relocated** to Articulate, an e-learning platform.



Significant Findings of In-depth interview (Oct-Nov 2023) prior to course development

Finding 1

Interface and **interactivity** play an important role in the course environment



Finding 2

Practice activities and assessments are essential for checking self-understanding in an e-learning environment



Development approach: outcome-based & student centered

Focus:

1. Instructional design
2. Practice activities and assessments
3. New content

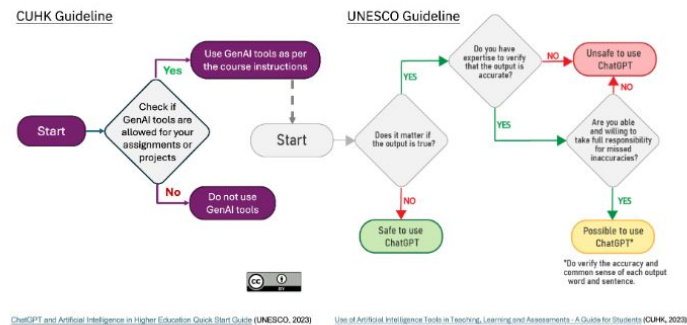
3. New Content

3.2.2 Evaluating AI-generated Information

Generative AI (GenAI thereafter) has advanced significantly in recent years, influencing the way of searching information. However, the reliability of GenAI content, like that of Internet information, is not guaranteed. It is important to evaluate GenAI content before using it.

Before using any GenAI tools, students should consult the University Guideline “Use of Artificial Intelligence Tools in Teaching, Learning and Assessments: A Guide for Students”.

Guidelines for GenAI Tools Use



ChatGPT and Artificial Intelligence in Higher Education: Quick Start Guide (UNESCO, 2023)

Use of Artificial Intelligence Tools in Teaching, Learning and Assessments – A Guide for Students (CUHK, 2023)

2) Tips for evaluating fake news

The International Federation of Library Associations and Institutions (IFLA) outlines eight steps for identifying fake news.



[View image source [here](#)]



To reduce the risk of encountering false information on the Internet, it is highly recommended to use LibrarySearch for accessing reliable newspapers. By doing so, you can ensure the information obtained is credible and well-researched.

How to search for information **using AI tools**, how to **evaluate**, and **cite** AI-generated information

Identify **fake news** and how to **evaluate** it



Significant Findings of the Pilot Run by Students (Feb-Mar 2025)

Finding 1	Finding 2
<p>GenAI-related content is now considered essential for students.</p> 	<p>Promoting and offering incentives for library online courses is essential for engaging students.</p> 



Incorporating GenAI Topics into Online Courses

What are the expectations for students?

“Add a respective module for how to **use appropriately Generate AI** and **how to cite AI content**. since **it is a trend to use AI as a study tool**. Therefore, maybe AI needs to be added as an **individual module**”

“a more detailed set of guidelines to **AI usage in research and citations**”

“elaborate more on **AI usage for searching and writing purposes**; probably creating **a whole module** for this one should be good”





Potential AI Topics for Inclusion

✓ **Academic Integrity and AI**

Plagiarism concerns, proper attribution, and responsible use and other considerations in coursework.

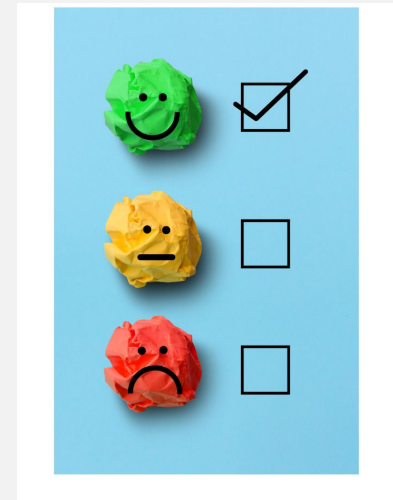
✓ **AI Literacy and content evaluation**

How to assess accuracy, bias, and reliability of AI outputs.

✓ **AI-powered Search Tools**

Demonstrates how AI can support efficient literature discovery, source evaluation, and research workflows. Some other applications in educations and research:

- GenAI for academic writing and summarization
- GenAI in literature reviews and citation management
- GenAI for data analysis and visualization
- GenAI in creative disciplines (e.g., art, music, design)
- GenAI for language learning and translation



The background of the slide is a light blue surface with a network diagram. Numerous colorful pushpins (green, blue, yellow, red, pink) are placed on the surface, and thin black lines connect them, creating a complex web of relationships. An orange rectangular box is overlaid on the left side of the slide, containing the title text.

Case 4:

Data Analytics Practice Opportunity



Data Analytics Practice Opportunity 2024/25

數據分析實踐機會 2024/25



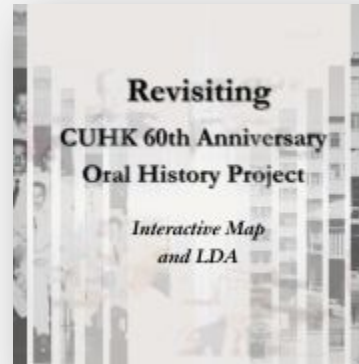
Co-Organizers: CUHK Library and Data Science and Policy Studies, School of Governance and Policy Science, CUHK

All full-time undergraduate and postgraduate students at CUHK

Data Literacy + AI Literacy

4 cohorts: 2021/22, 2022/23, 2023/24, 2024/25

Projects in 2024/25



Source: <https://dsprojects.lib.cuhk.edu.hk/en/projects/#DA>

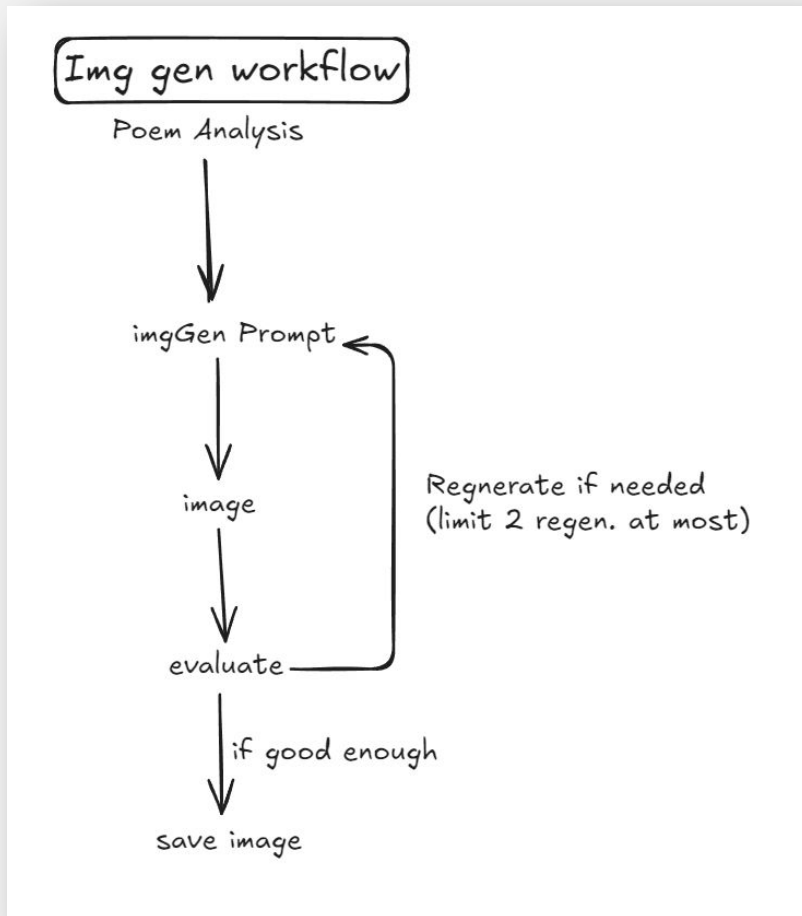


Aim: make Chinese Modern Poetry easier to understand by performing basic data analysis and visualization to generate one image per poem

Data Source: 小說與詩 provided by editor and writer 魏鵬展, and published by 香港小說學會, 香港詩歌協會 (1st and 2nd issues), and 香港小說與詩協會 (for rest of the issues). indexed in the Hong Kong Literature Database, which is developed by the CUHK Library.

Source: <https://dsprojects.lib.cuhk.edu.hk/en/projects/chinese-modern-poetry/introduction/>

Image Generation Workflow



- 1. Poem Analysis:** A text-based LLM (**GPT-4o**) analyzes the poem to identify key elements, semantic, and core message of it.
- 2. Prompt Engineering:** crafts a detailed image generation prompt, selecting a visual style that resonates with the poem's themes.
- 3. Image Generation:** processed by **FLUX-pro-1.1** to create a visual representation.
- 4. Evaluation:**
 - Appropriateness
 - Representation of the key elements
 - Representation of the semantics
 - Representation of the core message
 - Technical quality
- 5. Regeneration:**

Source: <https://dsprojects.lib.cuhk.edu.hk/en/projects/chinese-modern-poetry/image-generation-workflow/>

Image Generation Results (1)



Source: <https://dsprojects.lib.cuhk.edu.hk/en/projects/chinese-modern-poetry/image-generation-result/>

Image Generation Results (2)

居室一覽 ◎陳德錦

一個蛛網形成了，
北風，吹不進它的懷抱。
衣櫃壁立，像給灰牆
加了一件大衣，
角落裡那部發熱器，
風琴模樣，
暖不透一室的清冷。
收音機不再發聲，
舊書挨著新書過年。
門扇上貼著一個小女孩
站在水壩上的留影，
身邊的人飄著黑髮。
這三度空間，不高
也不深，能容我
用記憶浪遊大半天。
木床不過六呎，
卻整整攬住
我一生的夢。



Challenges

- Rapid Technological Change
- Budget Constraints
- Duplicate Efforts
- Changing User Behavior and Expectations



Opportunities

- Increased Collaboration Opportunities
- Addressing Misinformation and Promoting Critical AI Awareness
- Proactive Role as a Digital Literacy Leader
- Building Institutional Capacity



Moving Forward (2)

- Collaborative Capacity Building
- Institutional Advocacy
- Cross-Sector Partnerships



Acknowledgements

- Hong Kong Library Association
- JULAC Learning Strategies Committee

